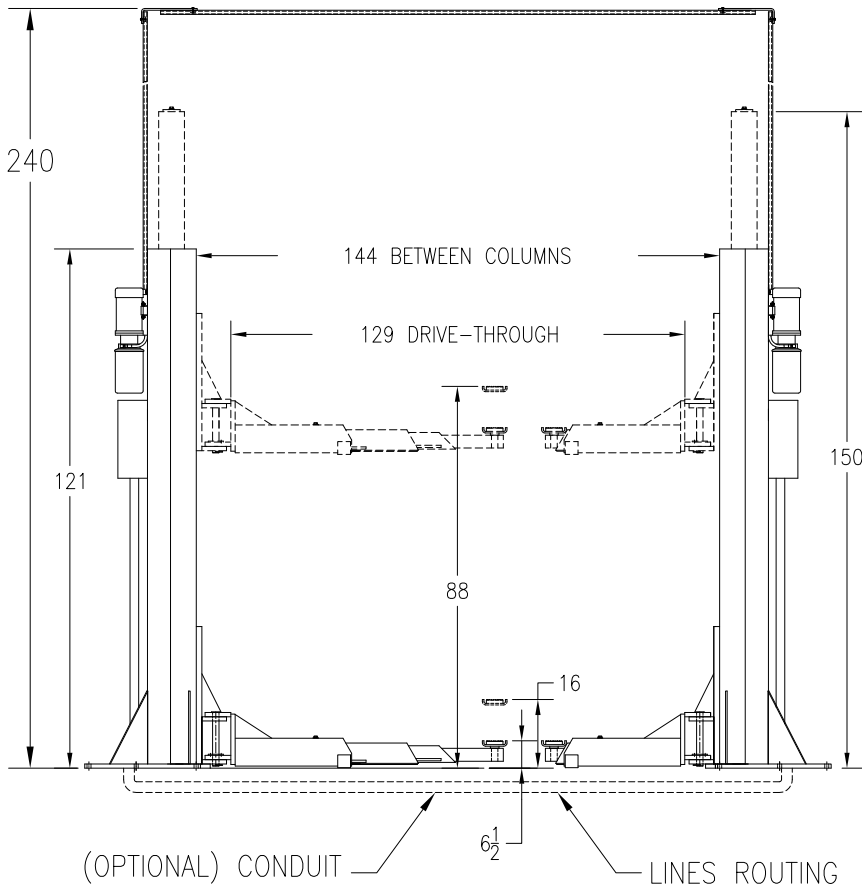


# TWO-POST LIFT MODEL: PK26E



CAPACITY:  
 MODEL PK26E: 26,000 LBS  
 RISE: 88"

CEILING HEIGHT  
 REQUIRED: 160" MIN

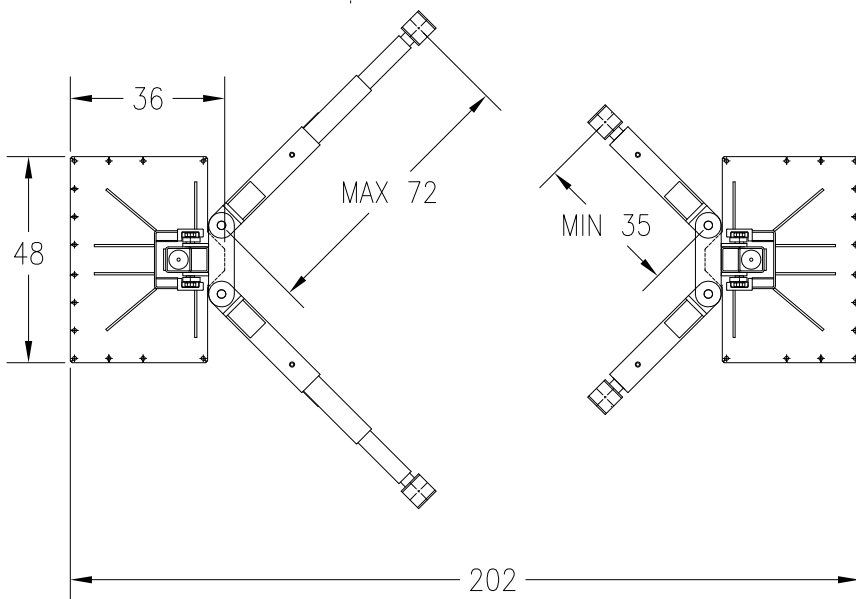
MOTORS: 2x2 HP

VOLTAGE 1 Ph.: 208-230V

VOLTAGE 3 Ph.: 230-460V

OPTIONAL VOLTAGE 3 Ph.: 575V

HEIGHT ADAPTERS



## FEATURES:

1. ELECTRONICALLY CONTROL
2. CLEAR FLOOR
3. NO OVERHEAD BEAM
4. NO EQUALIZING CABLES
5. LOW PROFILE ARMS
6. A SINGLE POINT LOCK RELEASE
7. ARM RESTRAIN

8. OPTIONAL POWER ARM EXTENSION ASSISTANCE

P K S

FEB.01/2008

DWG

PK26ESPEC02

A