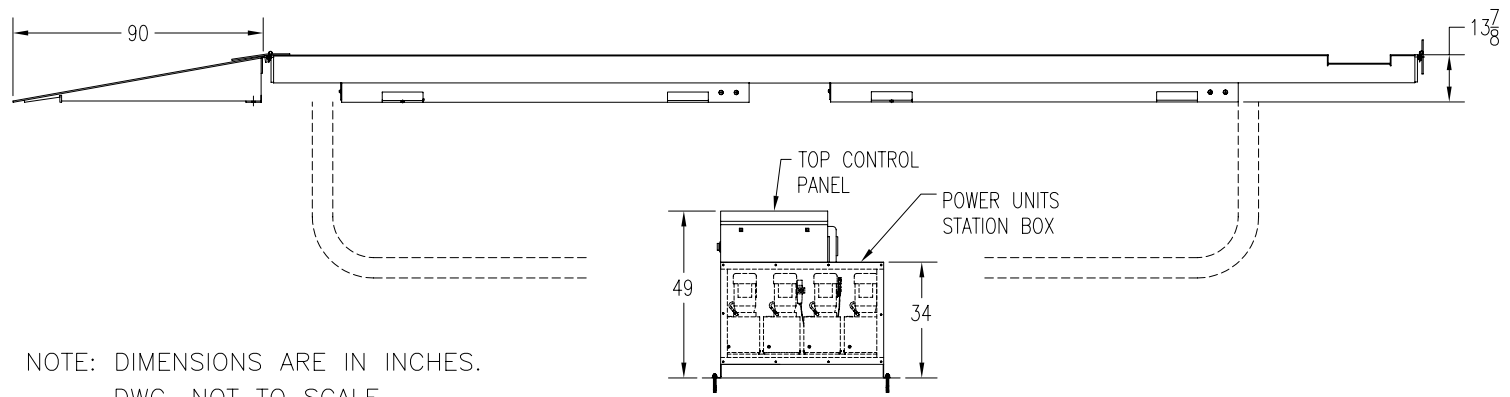


**SPECIFICATION**

CAPACITY	50,000LBS	
FOUR SCISSORS C/W 2 HYDRAULIC CYLINDERS		
SAFETY DEVICES ON EACH SCISSOR (MECHANICAL/AIR)		
QUADRUPLE POWER UNITS C/W EL. MOTORS	STANDARD	4 x 2HP, 3PH, 230/460V
	OPTIONAL	4 x 2HP, 3PH, 575V
	OPTIONAL	4 x 2HP, 1PH, 230V
SPEED OF RISE	72 SEC.	

		DISTANCES		"A"	"B"
RUNWAYS LENGTH	MODEL: PKSC50-26	26' LONG	406"	0"	
	MODEL: PKSC50-28	28' LONG	430"	24"	
	MODEL: PKSC50-30	30' LONG	454"	48"	
	MODEL: PKSC50-32	32' LONG	478"	72"	
	MODEL: PKSC50-34	34' LONG	502"	96"	
	MODEL: PKSC50-36	36' LONG	526"	120"	
	MODEL: PKSC50-38	38' LONG	550"	144"	
MODEL: PKSC50-40	40' LONG	574"	168"		

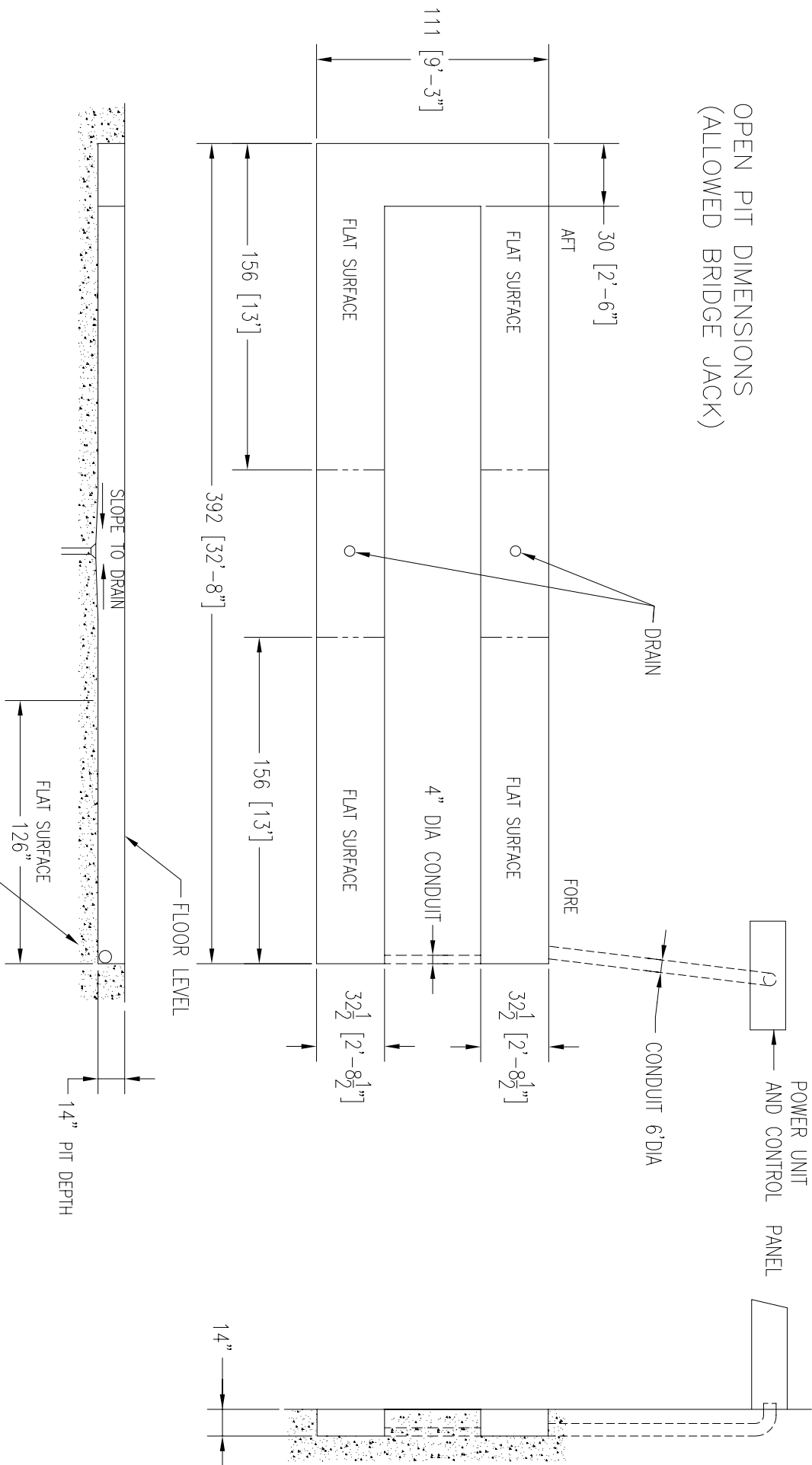
OPTIONAL - ROLLING JACKING BEAM



NOTE: DIMENSIONS ARE IN INCHES.  
DWG. NOT TO SCALE.

# SCISSOR LIFT: PKSC50-32R

OPEN PIT DIMENSIONS  
(ALLOWED BRIDGE JACK)



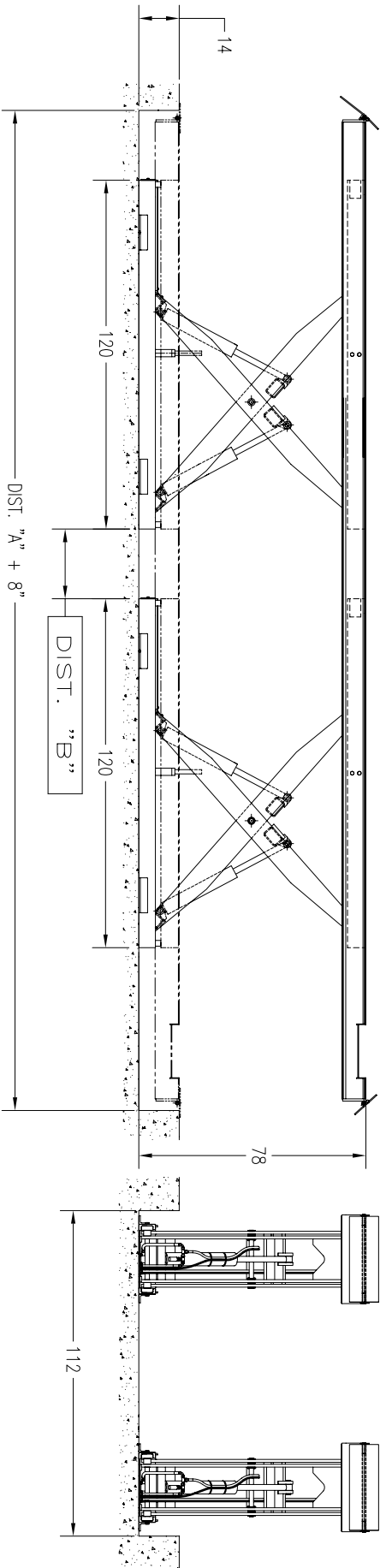
CAPACITY: 50,000 LB

32' RUNWAYS

3,000 PSI 6" MIN. THICK REINFORCED CONCRETE

NOTE: DIMENSIONS ARE IN INCHES.  
DWG. NOT TO SCALE.

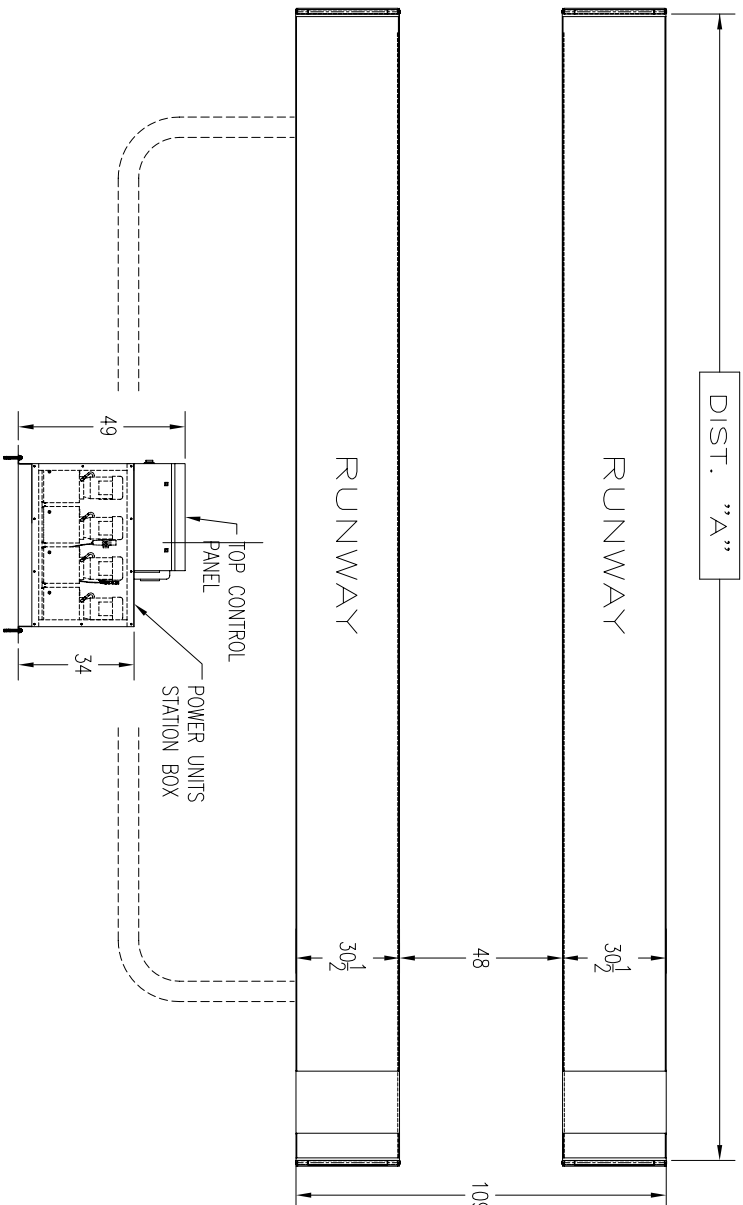
TITLE	MATERIAL	NOTES
SCISSOR LIFT 50x32 (PIT DIM.)	A	SC50R
P K S	AUG.04/2008	DWG SC50032R/03
		A



**SPECIFICATION**

CAPACITY	50,000LBS	
FOUR SCISSORS C/W 2 HYDRAULIC CYLINDERS		
SAFETY DEVICES ON EACH SCISSOR (MECHANICAL/AIR)		
QUADRUPLE	STANDARD	4 x 2HP, 3PH, 230/460V
POWER UNITS	OPTIONAL	4 x 2HP, 3PH, 575V
C/W EL. MOTORS	OPTIONAL	4 x 2HP, 1PH, 230V
SPEED OF RISE	72 SEC.	

	DISTANCES "A" "B"	
MODEL: PKSC50-26	26' LONG	512-1/2" 0"
MODEL: PKSC50-28	28' LONG	537-1/2" 24"
MODEL: PKSC50-30	30' LONG	561-1/2" 48"
MODEL: PKSC50-32	32' LONG	585-1/2" 72"
MODEL: PKSC50-34	34' LONG	609-1/2" 96"
MODEL: PKSC50-36	36' LONG	633-1/2" 120"
MODEL: PKSC50-38	38' LONG	657-1/2" 144"
MODEL: PKSC50-40	40' LONG	681-1/2" 168"
OPTIONAL — ROLLING JACKING BEAM		



NOTE: DIMENSIONS ARE IN INCHES.  
DWG. NOT TO SCALE.

DWGN.	JK	TITLE	SCISSOR LIFT SPECIFICATION	MODEL:	PKSC50R
APPR	KK	P	K	S	JULY 26/2007
				DWG.	FIG. 02
					A