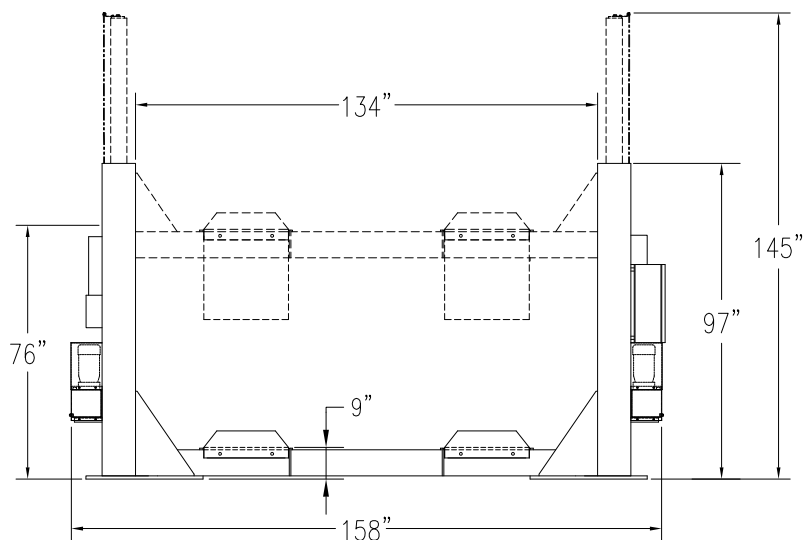
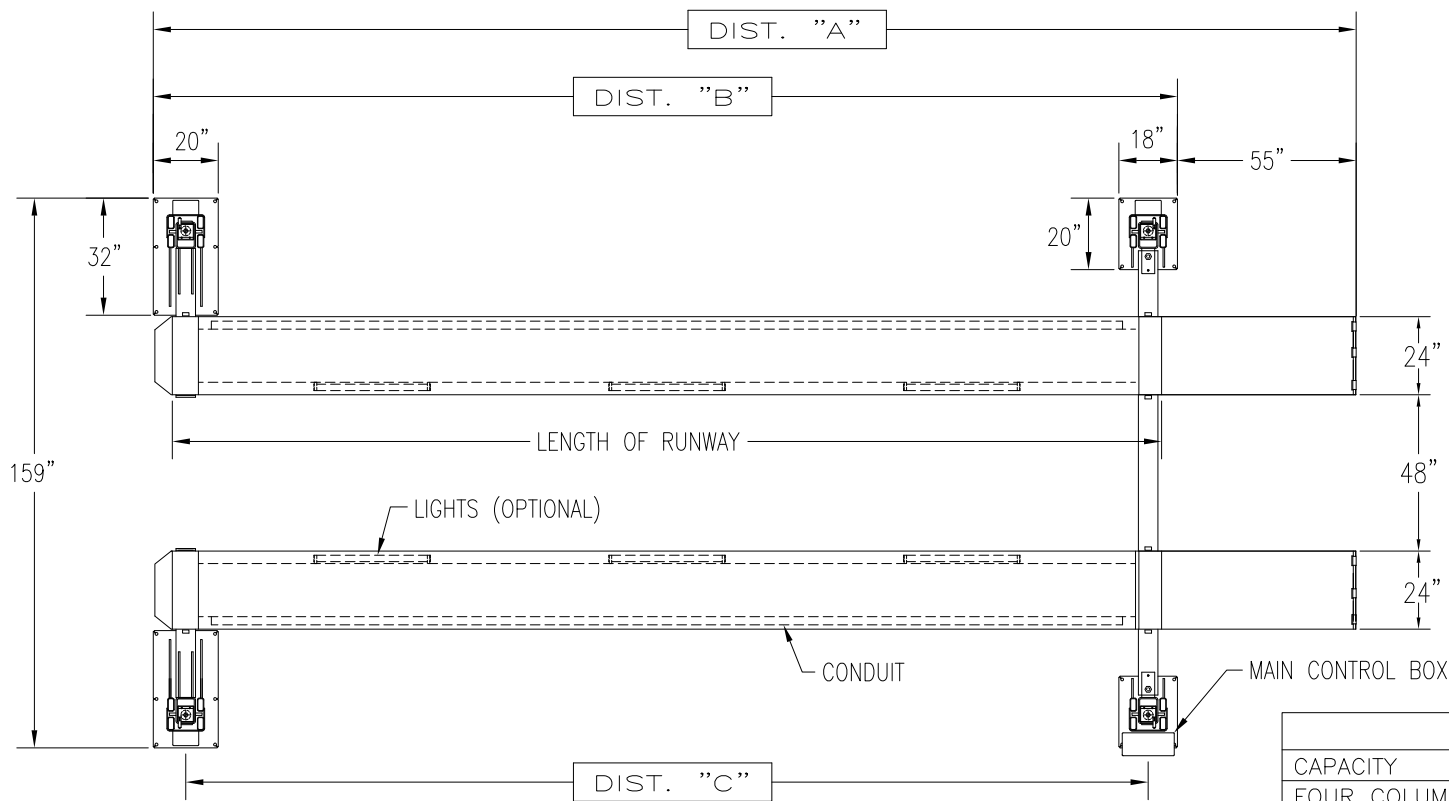


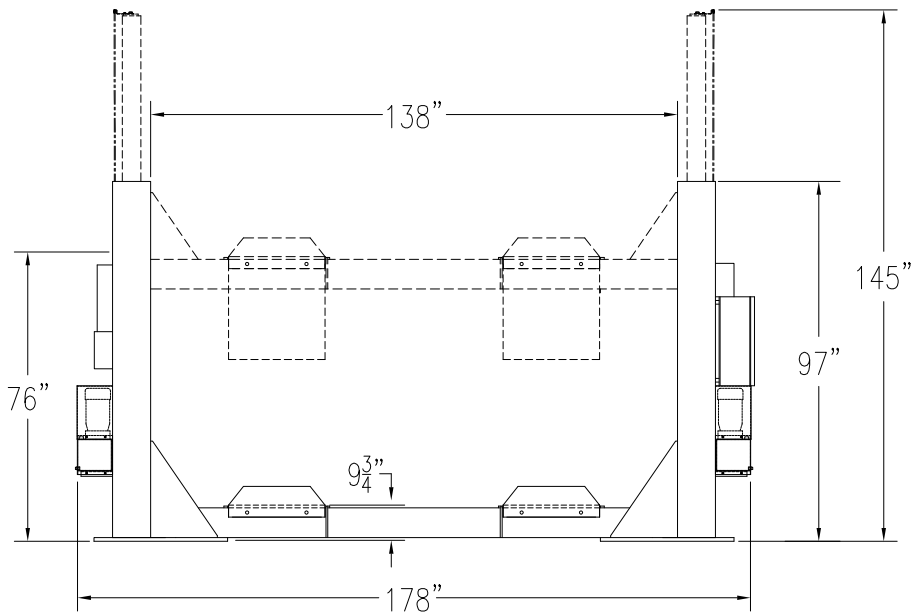
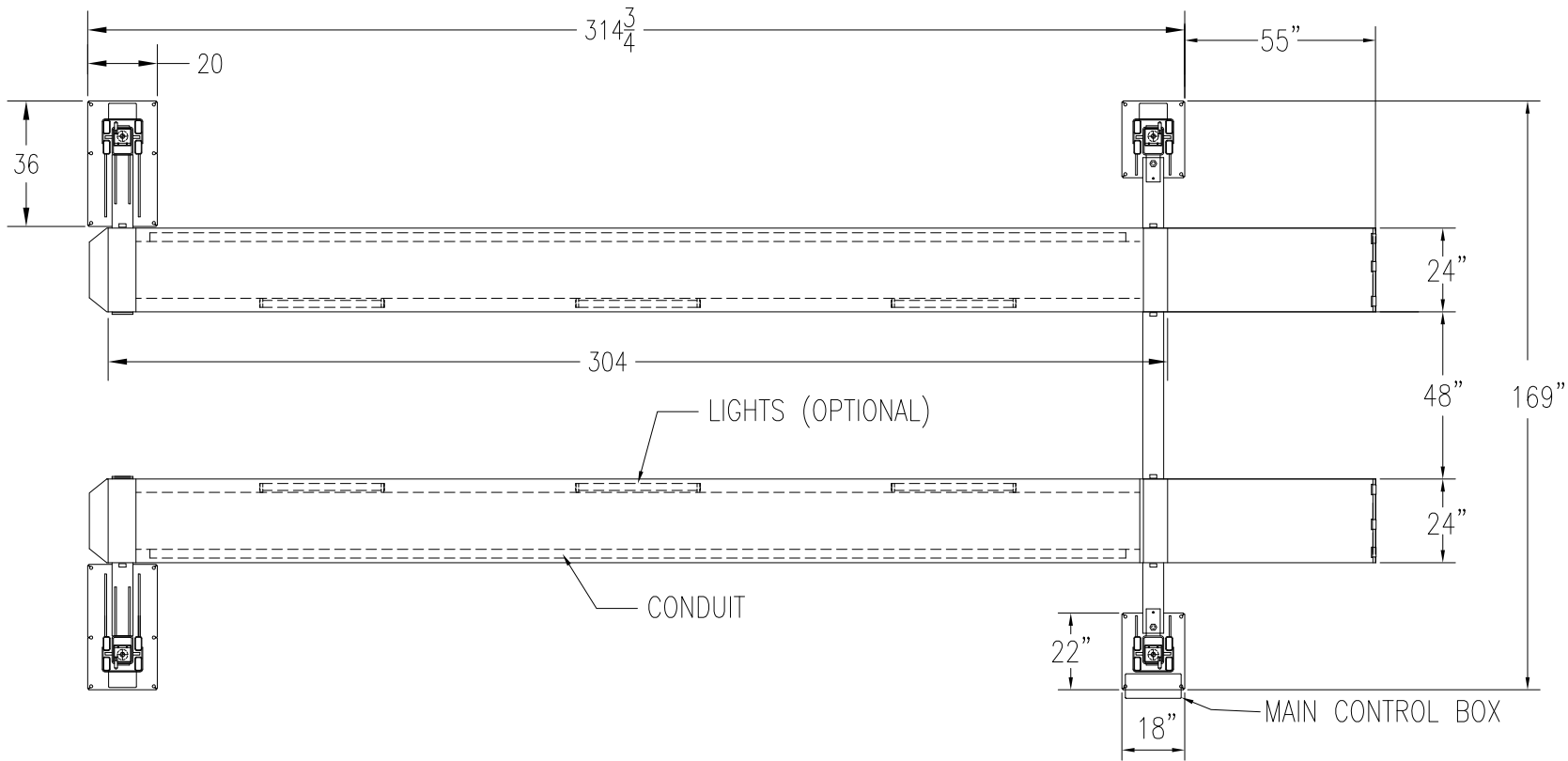
CAPACITY	30,000 LBS	INSIDE COLUMN CLEARANCE	134"
FOUR HYDRAULIC CYLINDERS		RUNWAY HEIGHT	9-3/4"
FOUR POWER UNITS		RUNWAY WIDTH	24"
PLC BASED CONTROL SYSTEM		OVERALL HEIGHT	97"
SAFETY DEVICES ON EACH COLUMN(MECH.,HYDR.)		OVERALL LIFTING HEIGHT	76"
ELECTRICAL 4 X 2HP (230/460 V)		OVERALL WIDTH	159"
WHEELBASE 274"		OPTIONAL - ROLLING JACKING BEAM	

TITLE	FOUR POST LIFT - PK30-4-EOB - SPECIFICATION		NOTES	PK30-4-0B
P K S	FEB.22/2010	DWG	PK304250B-FIG.01	A



SPECIFICATION					
CAPACITY		30,000LBS			
FOUR COLUMNS C/W HYDRAULIC CYLINDERS					
SAFETY DEVICES ON EACH COLUMN (MECHANICAL/AIR)					
FOUR POWER UNITS	STANDARD	4 x 2HP, 3PH, 230/460V			
C/W EL. MOTORS	OPTIONAL	4 x 2HP, 3PH, 575V			
PLC BASED CONTROL SYSTEM					
SPEED OF RISE 72 SEC.					
RUNWAY WIDTH: 24", OPTIONAL: 30"		DISTANCES			
RUNWAY HEIGHT 9"		"A"	"B"	"C"	
RUNWAYS LENGTH	MODEL: PK30E-4-25-OF	25' LONG	36 ⁷ / ₈ "	312 ³ / ₄ "	293 ³ / ₄ "
	MODEL: PK30E-4-30-OF	30' LONG	42 ⁷ / ₈ "	372 ³ / ₄ "	353 ³ / ₄ "
	MODEL: PK30E-4-35-OF	35' LONG	48 ⁷ / ₈ "	432 ³ / ₄ "	413 ³ / ₄ "
	MODEL: PK30E-4-40-OF	40' LONG	54 ⁷ / ₈ "	492 ³ / ₄ "	472 ³ / ₄ "
INSIDE COLUMN CLEARANCE		134"			
OVERALL LIFTING HEIGHT		76"			
OVERALL HEIGHT		97"			
OVERALL WIDTH		159"			
OPTIONAL - ROLLING JACKING BEAM					

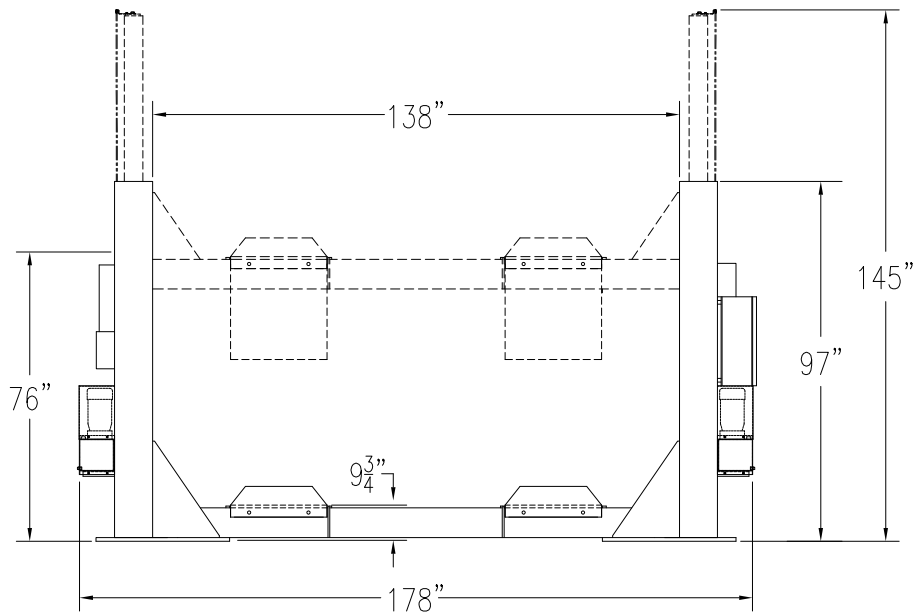
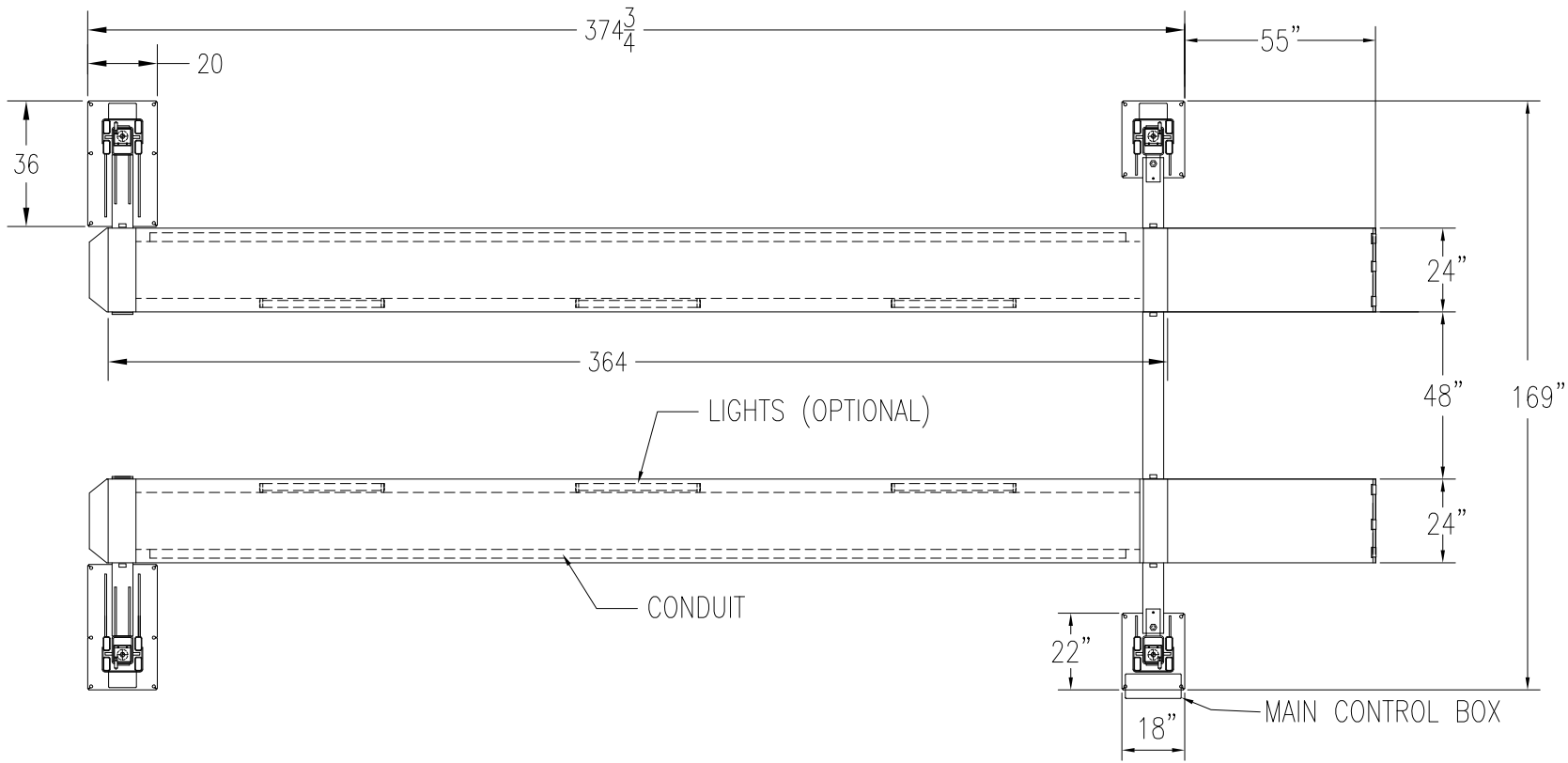
DWN.	TITLE	NOTES		
JK	FOUR POST LIFT MODEL: PK30E-4-OF	PK30E-4-OF		
APPR.	P K S	NOV.03/2011	DWG	PK30E40F-FIG.01
KK				A



NOTE: 25' RUNWAYS

CAPACITY	40,000 LBS	INSIDE COLUMN CLEARANCE	138"
FOUR HYDRAULIC CYLINDERS		RUNWAY HEIGHT	10"
FOUR POWER UNITS		RUNWAY WIDTH	24"
PLC BASED CONTROL SYSTEM		OVERALL HEIGHT	97"
SAFETY DEVICES ON EACH COLUMN(MECH.,HYDR.)		OVERALL LIFTING HEIGHT	76"
ELECTRICAL 4 X 2HP (230/460 V)		OVERALL WIDTH	178"
WHEELBASE 280"		OPTIONAL - ROLLING JACKING BEAM	

TITLE		NOTES	
FOUR POST LIFT - PK40-4-250F - SPECIFICATION		PK40-4-E0F	
P K S	MAY.30/2007	DWG PK404E0F-FIG.02	A



CAPACITY	40,000 LBS	INSIDE COLUMN CLEARANCE	138"
FOUR HYDRAULIC CYLINDERS		RUNWAY HEIGHT	10"
FOUR POWER UNITS		RUNWAY WIDTH	24"
PLC BASED CONTROL SYSTEM		OVERALL HEIGHT	97"
SAFETY DEVICES ON EACH COLUMN(MECH.,HYDR.)		OVERALL LIFTING HEIGHT	76"
ELECTRICAL 4 X 2HP (230/460 V)		OVERALL WIDTH	176"
WHEELBASE 340"		OPTIONAL - ROLLING JACKING BEAM	

TITLE		NOTES	
FOUR POST LIFT - PK40-4-EOF - SPECIFICATION		PK40-4-EOF	
P K S	MAY.30/2007	DWG PK404EOF-FIG.01	A