

SPECIFICATION

SCISSOR LIFT MODEL: PKSC20 HYDRAULICALLY EQUALIZED
 CAPACITY 20,000LBS
 TWO SCISSORS POSTS C/W FOUR HYDRAULIC CYLINDERS
 TWO SAFETY DEVICES ON EACH POST (MECHANICAL/AIR)

POWER UNIT C/W EL. MOTORS P/U W/P 3050 PSI	STANDARD	5HP, 3PH, 230/460V
	OPTIONAL	5HP, 3PH, 575V
	OPTIONAL	5HP, 1PH, 230V

SPEED OF RISE 72 SEC.

RUNWAY WIDTH 30-1/2"

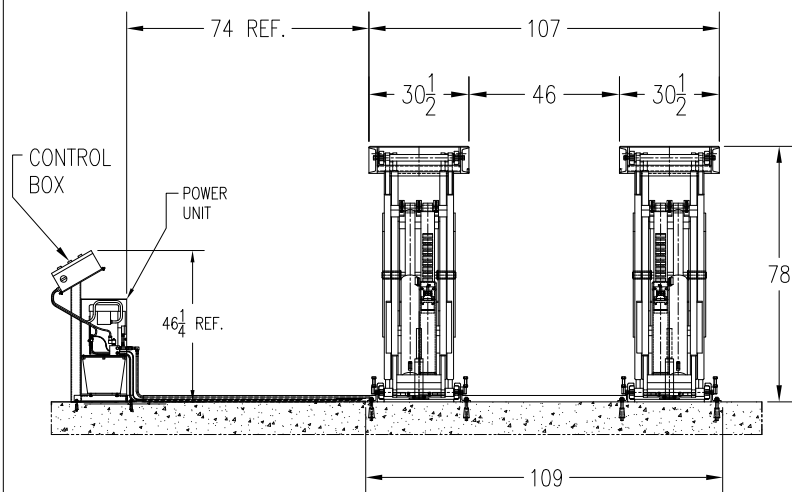
RUNWAY HEIGHT 8-1/4" DIST. "A"

RUNWAYS LENGTH	MODEL	LONG	DIST. "A"
	MODEL: PKSC20-17	17' LONG	299"
	MODEL: PKSC20-18	18' LONG	311"
	MODEL: PKSC20-19	19' LONG	323"
	MODEL: PKSC20-20	20' LONG	335"
	MODEL: PKSC20-21	21' LONG	347"
	MODEL: PKSC20-22	22' LONG	359"
	MODEL: PKSC20-23	23' LONG	371"
	MODEL: PKSC20-24	24' LONG	383"
	MODEL: PKSC20-25	25' LONG	395"
	MODEL: PKSC20-26	26' LONG	407"
	MODEL: PKSC20-27	27' LONG	419"
	MODEL: PKSC20-28	28' LONG	422"
	MODEL: PKSC20-29	29' LONG	434"
	MODEL: PKSC20-30	30' LONG	446"

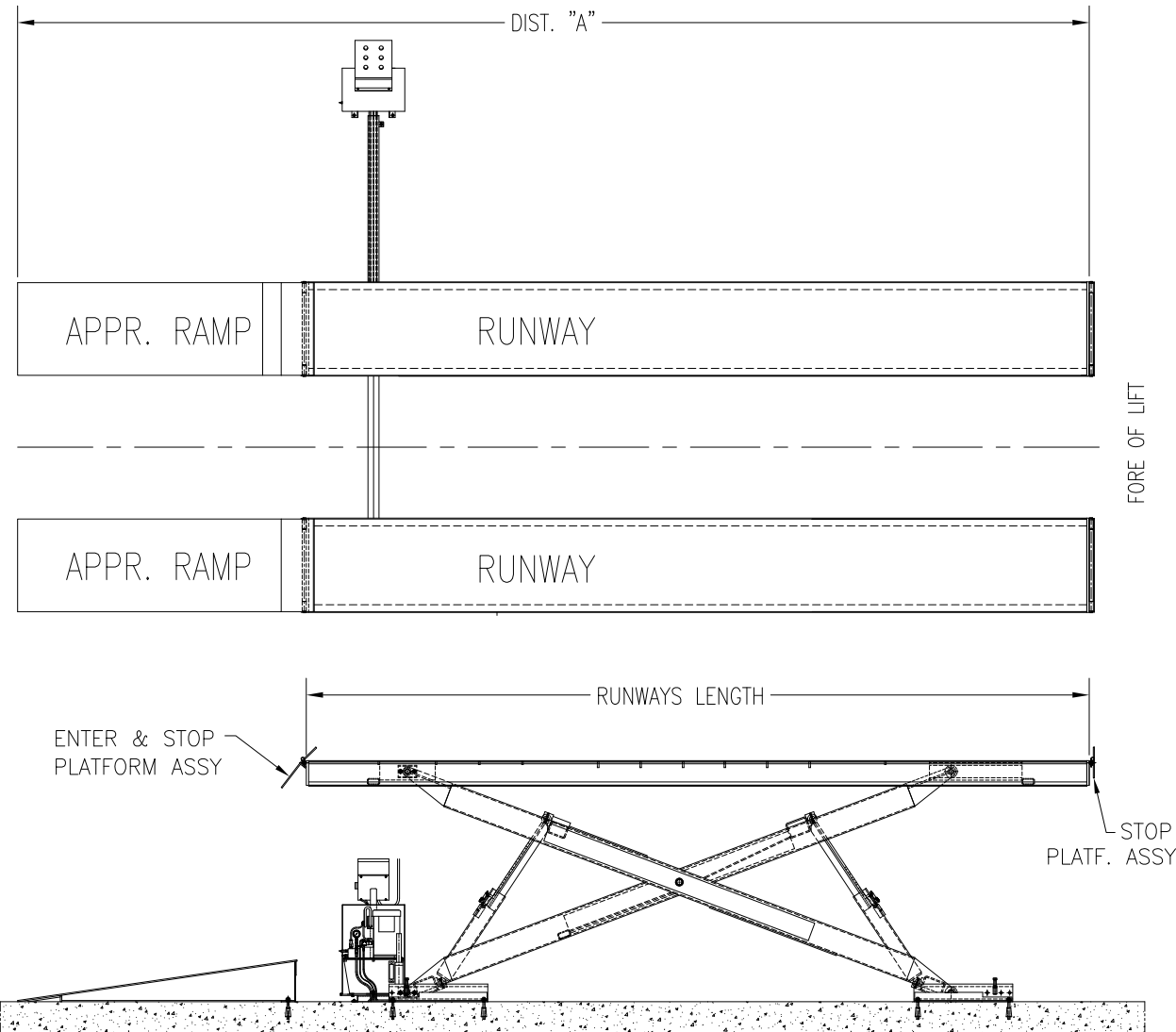
OVERALL LIFTING HEIGHT 5'-8 3/4"

OVERALL WIDTH 109"

OPTIONAL - ROLLING JACKING BEAM



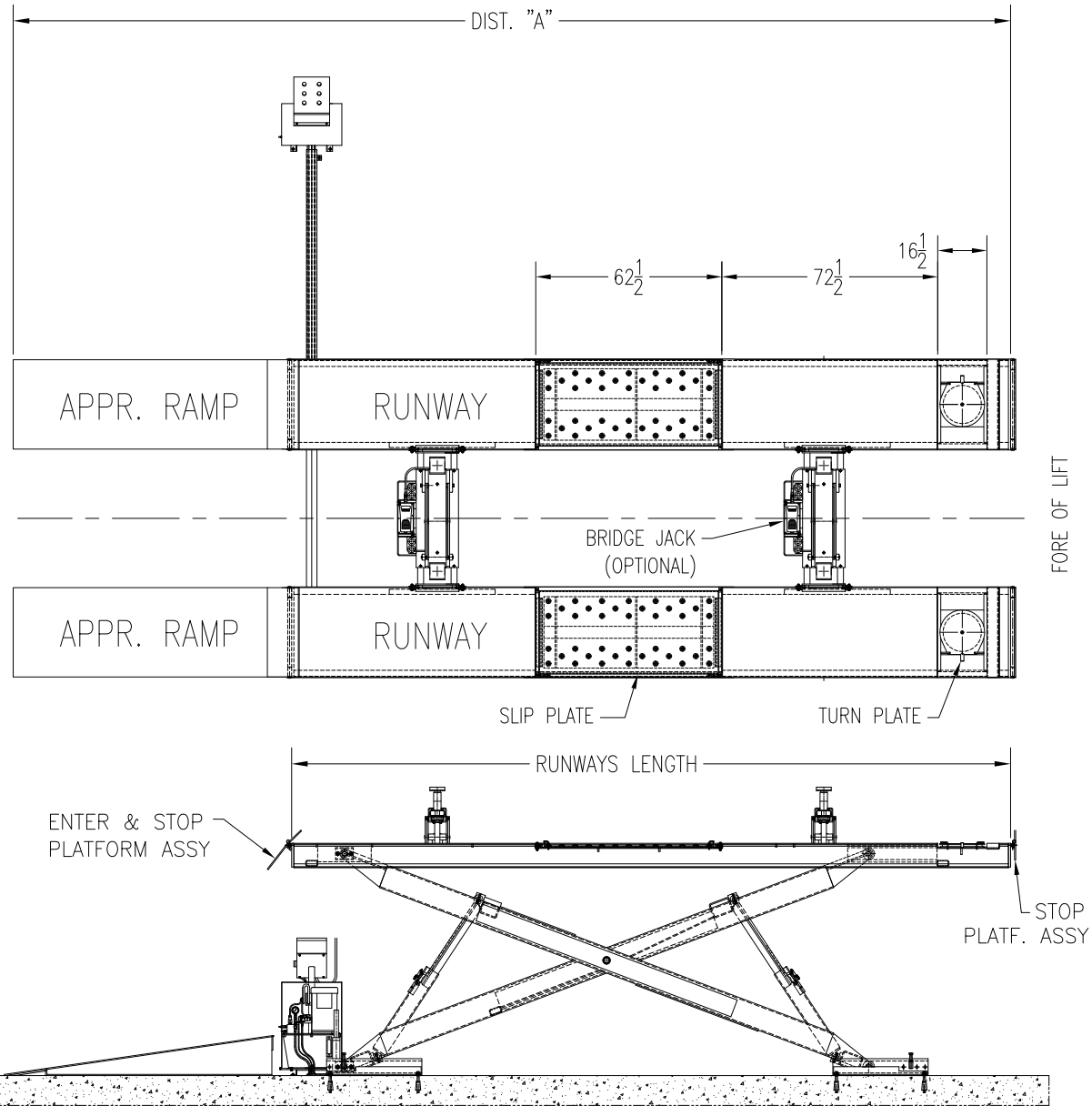
FLOOR REQUIREMENTS: 3,000 PSI,
 6" MIN. THICK REINFORCED CONCRETE.



DWN. JK	TITLE SCISSOR LIFT MODEL PKSC20	NOTES PKSC20
APPR. KK	P K S	MAY 04/2017
	DWG PKSC20-FIG.01	A

SPECIFICATION

SCISSOR LIFT MODEL: PKSC20A HYDRAULICALLY EQUALIZED			
CAPACITY 20,000LBS			
TWO SCISSORS POSTS C/W FOUR HYDRAULIC CYLINDERS			
TWO SAFETY DEVICES ON EACH POST (MECHANICAL/AIR)			
POWER UNIT	STANDARD	5HP, 3PH, 230/460V	
C/W EL. MOTORS	OPTIONAL	5HP, 3PH, 575V	
P/U W/P 3050 PSI	OPTIONAL	5HP, 1PH, 230V	
SPEED OF RISE 72 SEC.			
RUNWAY WIDTH 30-1/2"			
RUNWAY HEIGHT 8-1/4"			DIST. "A"
RUNWAYS LENGTH	MODEL: PKSC20-20A	20' LONG	335"
	MODEL: PKSC20-21A	21' LONG	347"
	MODEL: PKSC20-22A	22' LONG	359"
	MODEL: PKSC20-23A	23' LONG	371"
	MODEL: PKSC20-24A	24' LONG	383"
	MODEL: PKSC20-25A	25' LONG	395"
	MODEL: PKSC20-26A	26' LONG	407"
	MODEL: PKSC20-27A	27' LONG	419"
	MODEL: PKSC20-28A	28' LONG	422"
	MODEL: PKSC20-29A	29' LONG	434"
MODEL: PKSC20-30A	30' LONG	446"	
OVERALL LIFTING HEIGHT		5'-8 3/4"	
OVERALL WIDTH		109"	
OPTIONAL - ROLLING JACKING BEAM			

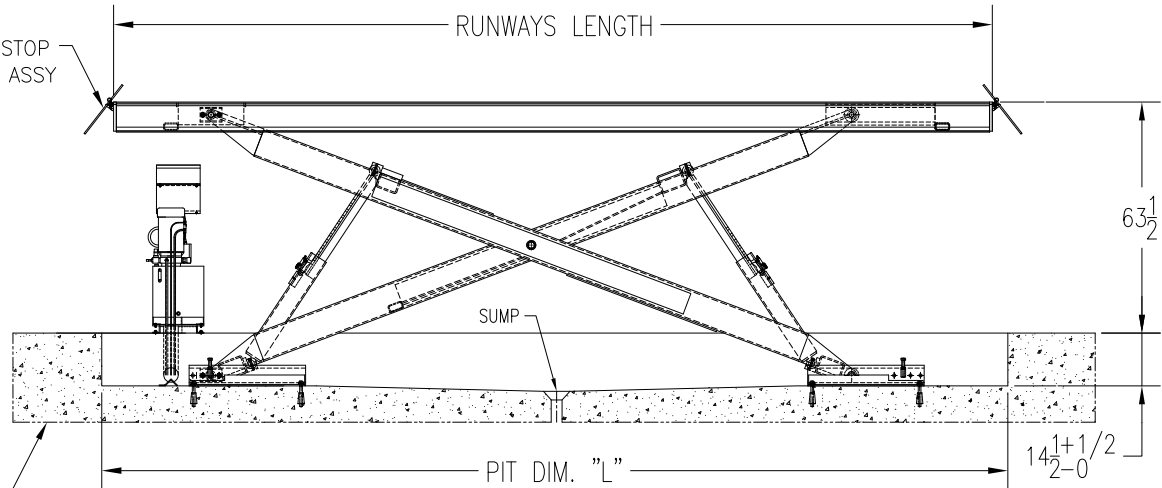
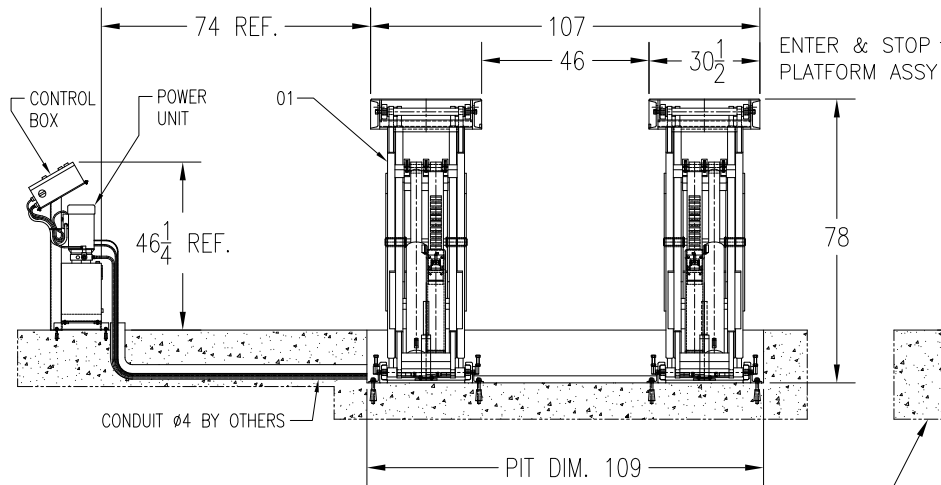
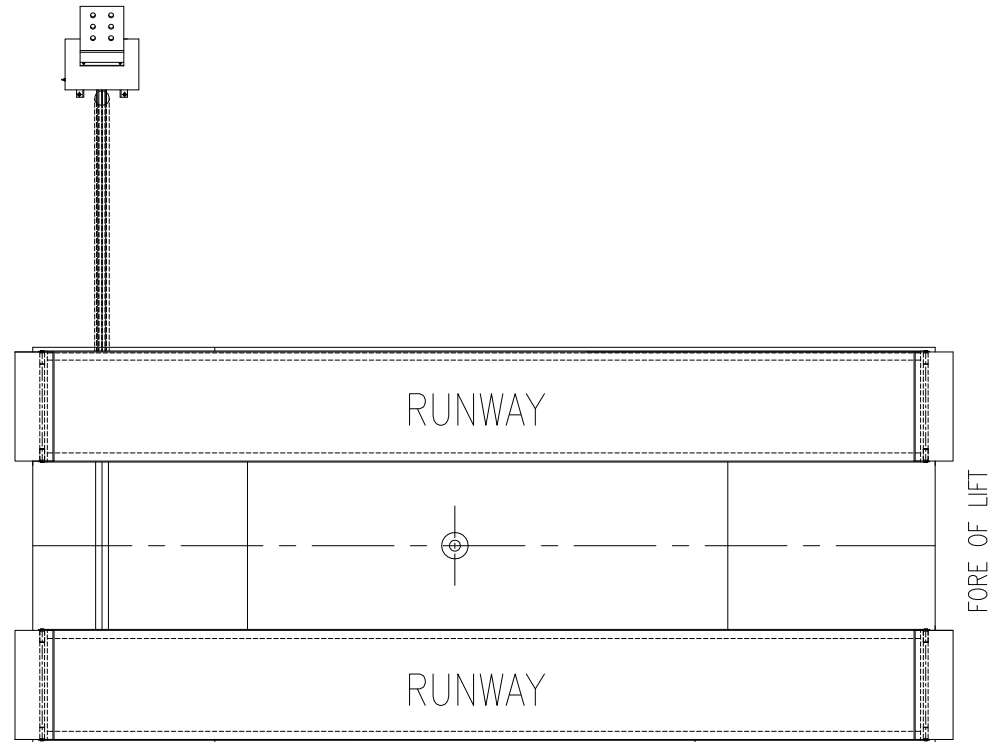


FLOOR REQUIREMENTS: 3,000 PSI,
6" MIN. THICK REINFORCED CONCRETE.

DWN. JK	TITLE SCISSOR LIFT MODEL PKSC20A	NOTES PKSC20A
APPR. KK	P K S	DWG PKSC20A-FIG.01
	MAY 04/2017	A

SPECIFICATION

SCISSOR LIFT MODEL: PKSC20R HYDRAULICALLY EQUALIZED			
CAPACITY 20,000LBS			
TWO SCISSORS POSTS C/W FOUR HYDRAULIC CYLINDERS			
TWO SAFETY DEVICES ON EACH POST (MECHANICAL/AIR)			
POWER UNIT	STANDARD	5HP, 3PH, 230/460V	
C/W EL. MOTORS	OPTIONAL	5HP, 3PH, 575V	
P/U W/P 3050 PSI	OPTIONAL	5HP, 1PH, 230V	
SPEED OF RISE 72 SEC.			
RUNWAY WIDTH 30-1/2"			
RUNWAY HEIGHT 8-1/4"			PIT DIM. "L"
RUNWAYS LENGTH	MODEL: PKSC20-17-R	17' LONG	212"
	MODEL: PKSC20-18-R	18' LONG	224"
	MODEL: PKSC20-19-R	19' LONG	236"
	MODEL: PKSC20-20-R	20' LONG	248"
	MODEL: PKSC20-21-R	21' LONG	260"
	MODEL: PKSC20-22-R	22' LONG	272"
	MODEL: PKSC20-23-R	23' LONG	284"
	MODEL: PKSC20-24-R	24' LONG	296"
	MODEL: PKSC20-25-R	25' LONG	308"
	MODEL: PKSC20-26-R	26' LONG	320"
	MODEL: PKSC20-27-R	27' LONG	332"
	MODEL: PKSC20-28-R	28' LONG	344"
	MODEL: PKSC20-29-R	29' LONG	356"
MODEL: PKSC20-30-R	30' LONG	368"	
OVERALL LIFTING HEIGHT		5'-8 3/4"	
OVERALL WIDTH		109"	
OPTIONAL - ROLLING JACKING BEAM			



FLOOR REQUIREMENTS: 3,000 PSI,
6" MIN. THICK REINFORCED CONCRETE.

DWN.	JK	TITLE SCISSOR LIFT MODEL PKSC20R	NOTES PKSC20R
APPR.	KK	P K S	MAY 04/2017
		DWG PKSC20R-FIG.01	A

SPECIFICATION

SCISSOR LIFT MODEL: PKSC25 HYDRAULICALLY EQUALIZED
 CAPACITY 25,000LBS
 TWO SCISSORS POSTS C/W FOUR HYDRAULIC CYLINDERS
 TWO SAFETY DEVICES ON EACH POST (MECHANICAL/AIR)

POWER UNIT C/W EL. MOTORS P/U W/P 3250 PSI	STANDARD	5HP, 3PH, 230/460V
	OPTIONAL	5HP, 3PH, 575V
	OPTIONAL	5HP, 1PH, 230V

SPEED OF RISE 72 SEC.

RUNWAY WIDTH 30-1/2"

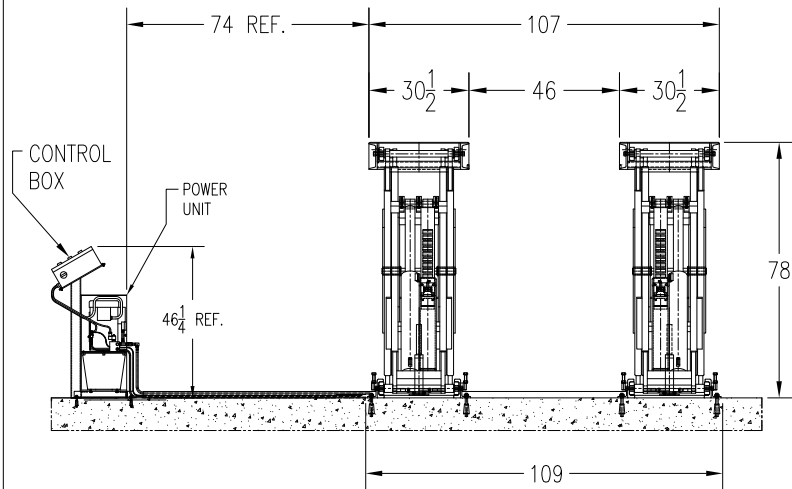
RUNWAY HEIGHT 8-1/4"

RUNWAYS LENGTH	MODEL	LONG	DIST. "A"
	MODEL: PKSC25-17	17' LONG	299"
	MODEL: PKSC25-18	18' LONG	311"
	MODEL: PKSC25-19	19' LONG	323"
	MODEL: PKSC25-20	20' LONG	335"
	MODEL: PKSC25-21	21' LONG	347"
	MODEL: PKSC25-22	22' LONG	359"
	MODEL: PKSC25-23	23' LONG	371"
	MODEL: PKSC25-24	24' LONG	383"
	MODEL: PKSC25-25	25' LONG	395"
	MODEL: PKSC25-26	26' LONG	407"
	MODEL: PKSC25-27	27' LONG	419"
	MODEL: PKSC25-28	28' LONG	422"
	MODEL: PKSC25-29	29' LONG	434"
	MODEL: PKSC25-30	30' LONG	446"

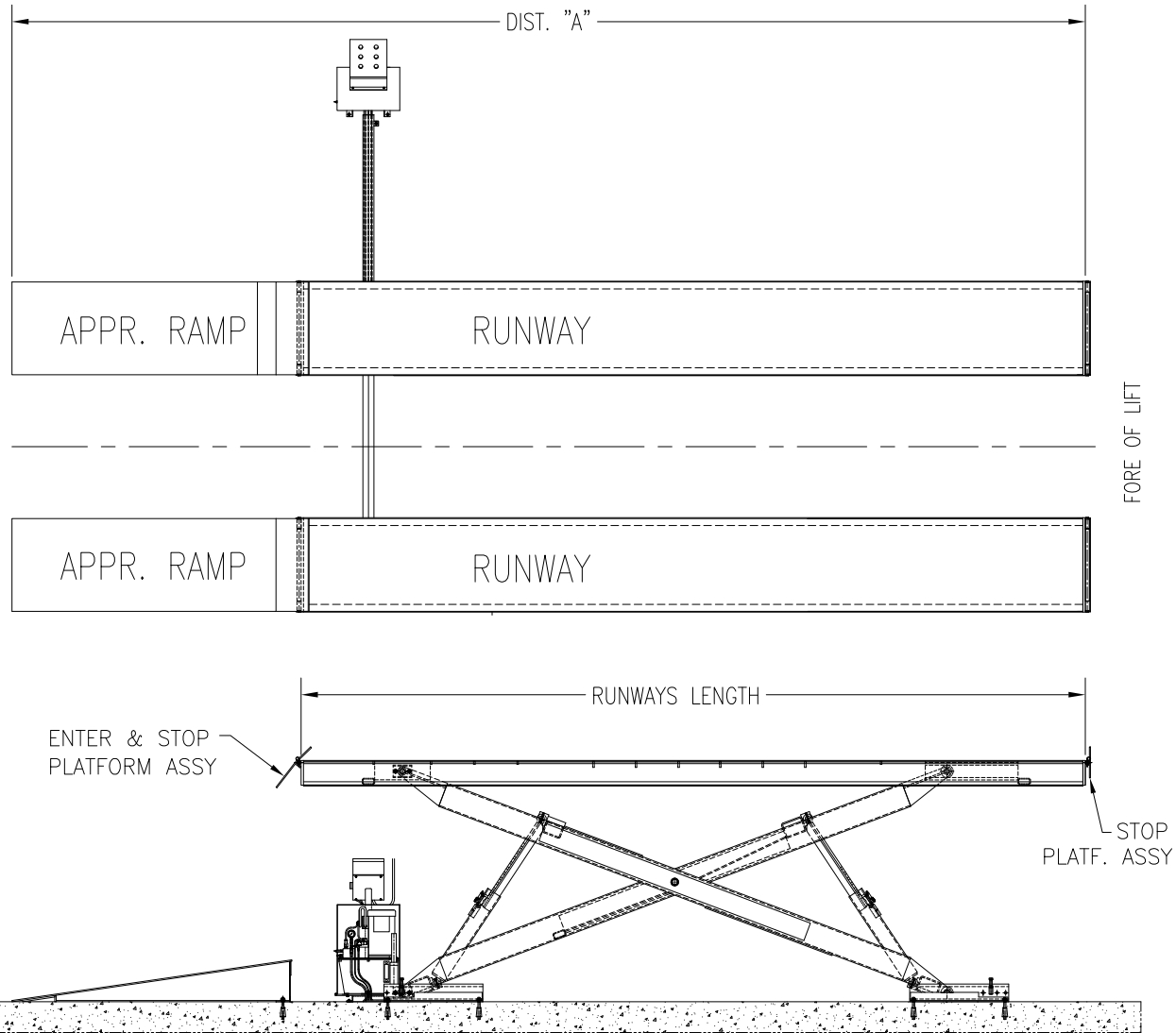
OVERALL LIFTING HEIGHT 5'-8 3/4"

OVERALL WIDTH 109"

OPTIONAL - ROLLING JACKING BEAM



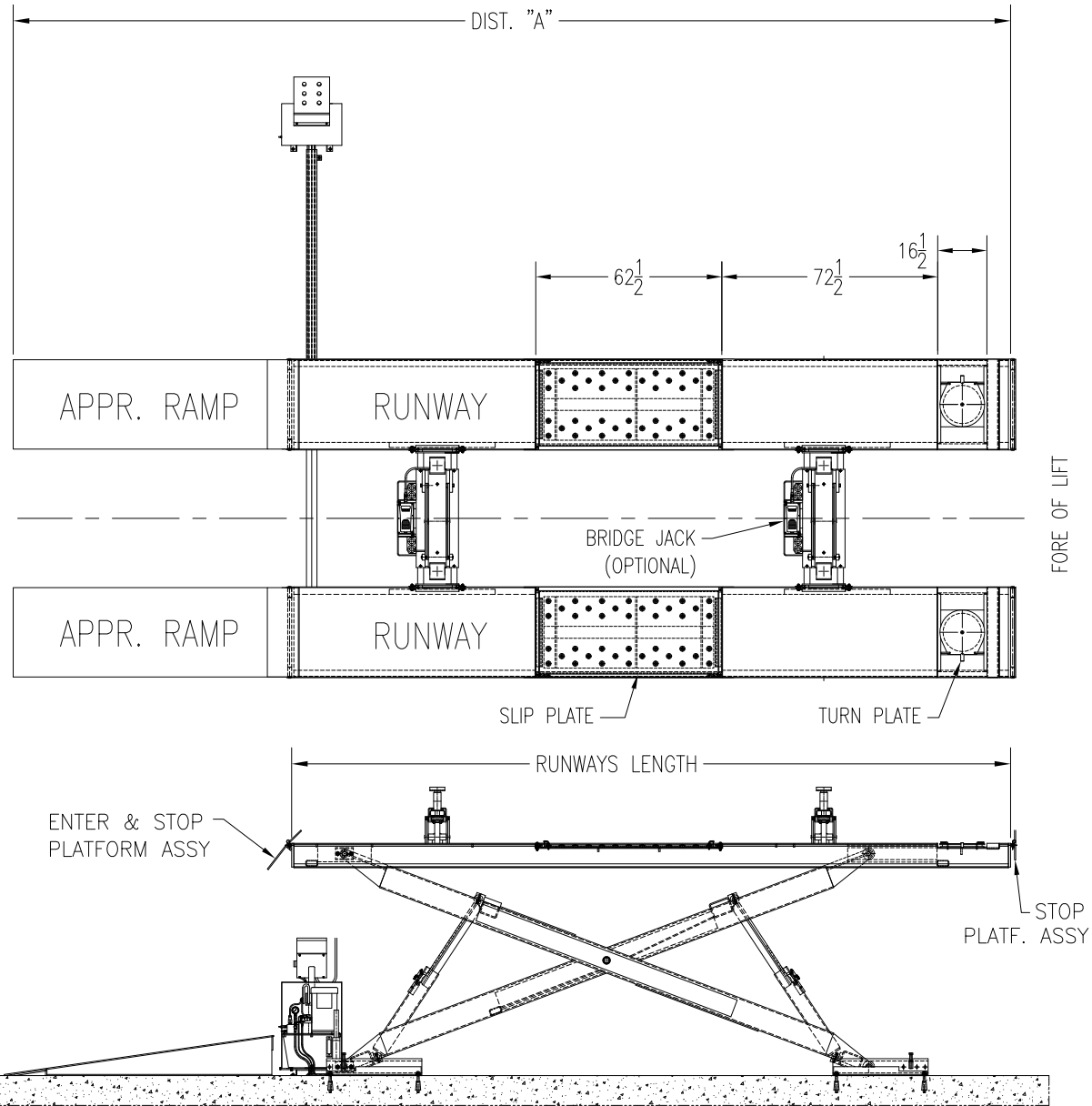
FLOOR REQUIREMENTS: 3,000 PSI,
 6" MIN. THICK REINFORCED CONCRETE.



DWN. JK	TITLE SCISSOR LIFT MODEL PKSC25	NOTES PKSC25
APPR. KK	P K S	MAY 04/2017
	DWG PKSC25-FIG.01	A

SPECIFICATION

SCISSOR LIFT MODEL: PKSC25A HYDRAULICALLY EQUALIZED			
CAPACITY 25,000LBS			
TWO SCISSORS POSTS C/W FOUR HYDRAULIC CYLINDERS			
TWO SAFETY DEVICES ON EACH POST (MECHANICAL/AIR)			
POWER UNIT	STANDARD	5HP, 3PH, 230/460V	
C/W EL. MOTORS	OPTIONAL	5HP, 3PH, 575V	
P/U W/P 3250 PSI	OPTIONAL	5HP, 1PH, 230V	
SPEED OF RISE 72 SEC.			
RUNWAY WIDTH 30-1/2"			
RUNWAY HEIGHT 8-1/4"			DIST. "A"
RUNWAYS LENGTH	MODEL: PKSC25-20A	20' LONG	335"
	MODEL: PKSC25-21A	21' LONG	347"
	MODEL: PKSC25-22A	22' LONG	359"
	MODEL: PKSC25-23A	23' LONG	371"
	MODEL: PKSC25-24A	24' LONG	383"
	MODEL: PKSC25-25A	25' LONG	395"
	MODEL: PKSC25-26A	26' LONG	407"
	MODEL: PKSC25-27A	27' LONG	419"
	MODEL: PKSC25-28A	28' LONG	422"
	MODEL: PKSC25-29A	29' LONG	434"
MODEL: PKSC25-30A	30' LONG	446"	
OVERALL LIFTING HEIGHT		5'-8 3/4"	
OVERALL WIDTH		109"	
OPTIONAL - ROLLING JACKING BEAM			

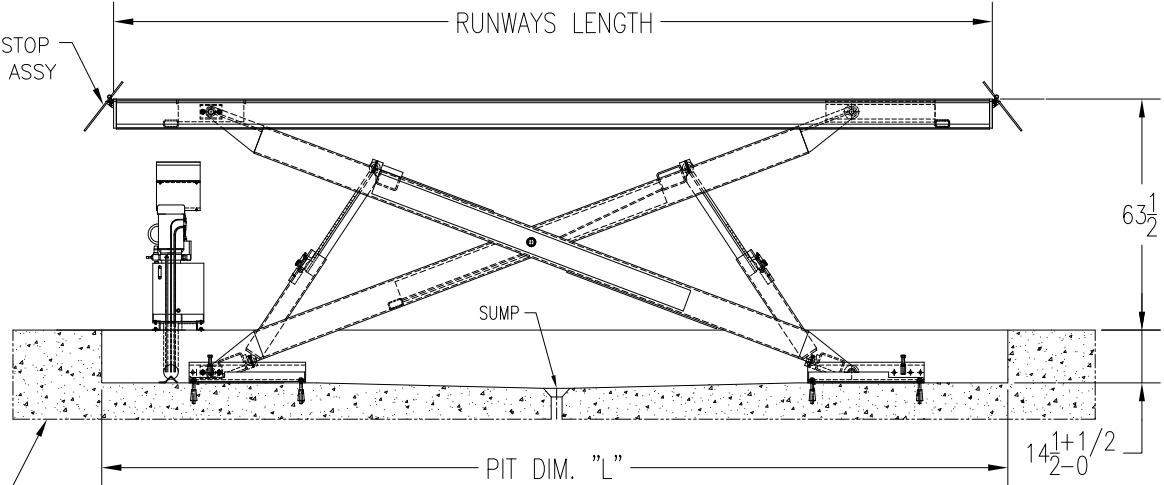
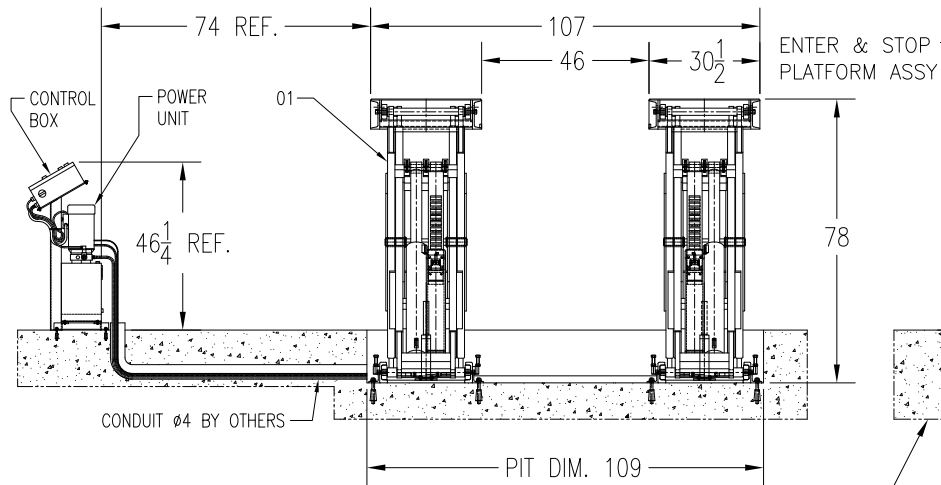
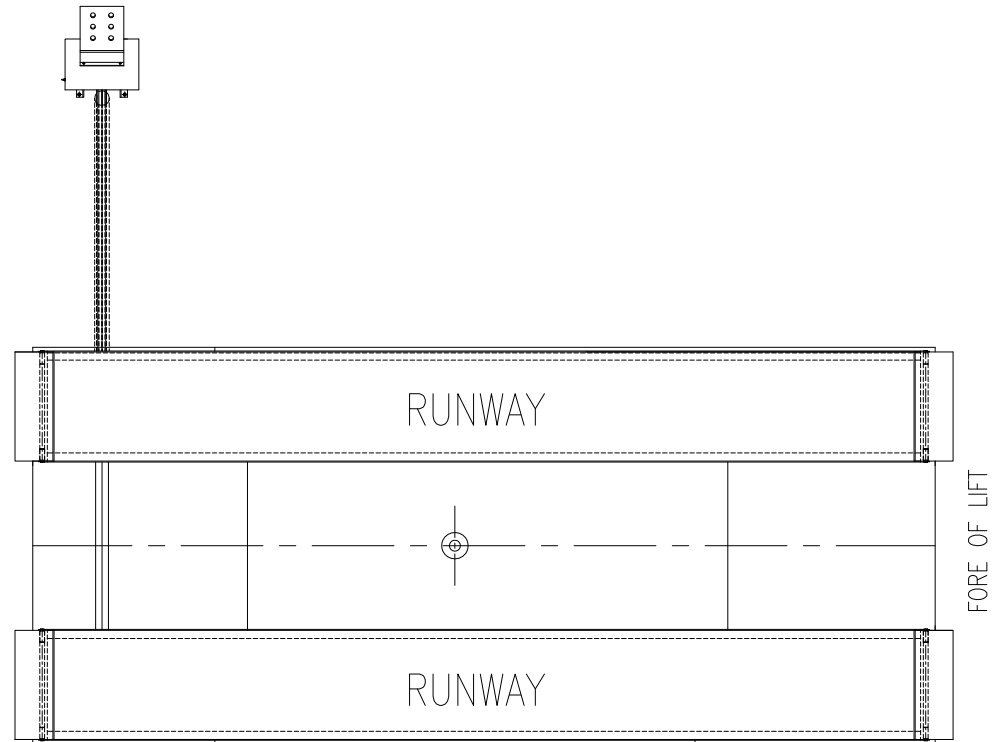


FLOOR REQUIREMENTS: 3,000 PSI,
6" MIN. THICK REINFORCED CONCRETE.

DWN.	JK	TITLE SCISSOR LIFT MODEL PKSC25A	NOTES PKSC25A
APPR.	KK	P K S	DWG PKSC25A-FIG.01
		MAY 04/2017	A

SPECIFICATION

SCISSOR LIFT MODEL: PKSC25R HYDRAULICALLY EQUALIZED			
CAPACITY 25,000LBS			
TWO SCISSORS POSTS C/W FOUR HYDRAULIC CYLINDERS			
TWO SAFETY DEVICES ON EACH POST (MECHANICAL/AIR)			
POWER UNIT	STANDARD	5HP, 3PH, 230/460V	
C/W EL. MOTORS	OPTIONAL	5HP, 3PH, 575V	
P/U W/P 3250 PSI	OPTIONAL	5HP, 1PH, 230V	
SPEED OF RISE 72 SEC.			
RUNWAY WIDTH 30-1/2"			
RUNWAY HEIGHT 8-1/4"			PIT DIM. "L"
RUNWAYS LENGTH	MODEL: PKSC25-17-R	17' LONG	212"
	MODEL: PKSC25-18-R	18' LONG	224"
	MODEL: PKSC25-19-R	19' LONG	236"
	MODEL: PKSC25-20-R	20' LONG	248"
	MODEL: PKSC25-21-R	21' LONG	260"
	MODEL: PKSC25-22-R	22' LONG	272"
	MODEL: PKSC25-23-R	23' LONG	284"
	MODEL: PKSC25-24-R	24' LONG	296"
	MODEL: PKSC25-25-R	25' LONG	308"
	MODEL: PKSC25-26-R	26' LONG	320"
	MODEL: PKSC25-27-R	27' LONG	332"
	MODEL: PKSC25-28-R	28' LONG	344"
	MODEL: PKSC25-29-R	29' LONG	356"
MODEL: PKSC25-30-R	30' LONG	368"	
OVERALL LIFTING HEIGHT		5'-8 3/4"	
OVERALL WIDTH		109"	
OPTIONAL - ROLLING JACKING BEAM			



FLOOR REQUIREMENTS: 3,000 PSI,
6" MIN. THICK REINFORCED CONCRETE.

DWN.	JK	TITLE SCISSOR LIFT MODEL PKSC25R	NOTES PKSC25R
APPR.	KK	P K S	DWG PKSC25R-FIG.01
		MAY 04/2017	A

SPECIFICATION

SCISSOR LIFT MODEL: PKSC30 HYDRAULICALLY EQUALIZED
 CAPACITY 30,000LBS
 TWO SCISSORS POSTS C/W FOUR HYDRAULIC CYLINDERS
 TWO SAFETY DEVICES ON EACH POST (MECHANICAL/AIR)

POWER UNIT C/W EL. MOTORS P/U W/P 3450 PSI	STANDARD	5HP, 3PH, 230/460V
	OPTIONAL	5HP, 3PH, 575V
	OPTIONAL	5HP, 1PH, 230V

SPEED OF RISE 72 SEC.

RUNWAY WIDTH 30-1/2"

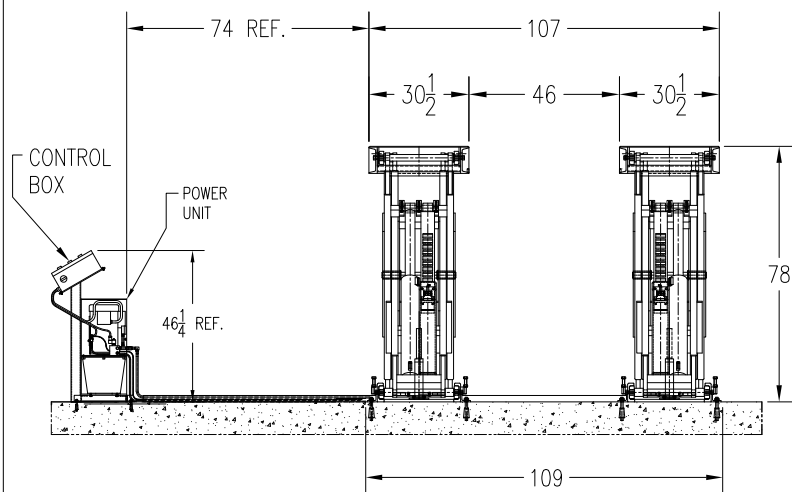
RUNWAY HEIGHT 8-1/4" DIST. "A"

RUNWAYS LENGTH	MODEL	LENGTH	DIST. "A"
	MODEL: PKSC30-17	17' LONG	299"
	MODEL: PKSC30-18	18' LONG	311"
	MODEL: PKSC30-19	19' LONG	323"
	MODEL: PKSC30-20	20' LONG	335"
	MODEL: PKSC30-21	21' LONG	347"
	MODEL: PKSC30-22	22' LONG	359"
	MODEL: PKSC30-23	23' LONG	371"
	MODEL: PKSC30-24	24' LONG	383"
	MODEL: PKSC30-25	25' LONG	395"
	MODEL: PKSC30-26	26' LONG	407"
	MODEL: PKSC30-27	27' LONG	419"
	MODEL: PKSC30-28	28' LONG	422"
	MODEL: PKSC30-29	29' LONG	434"
	MODEL: PKSC30-30	30' LONG	446"

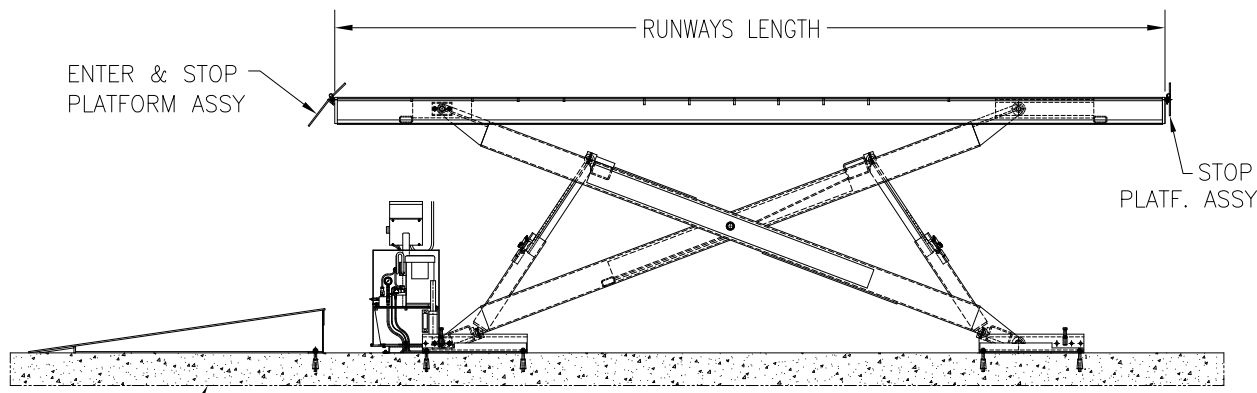
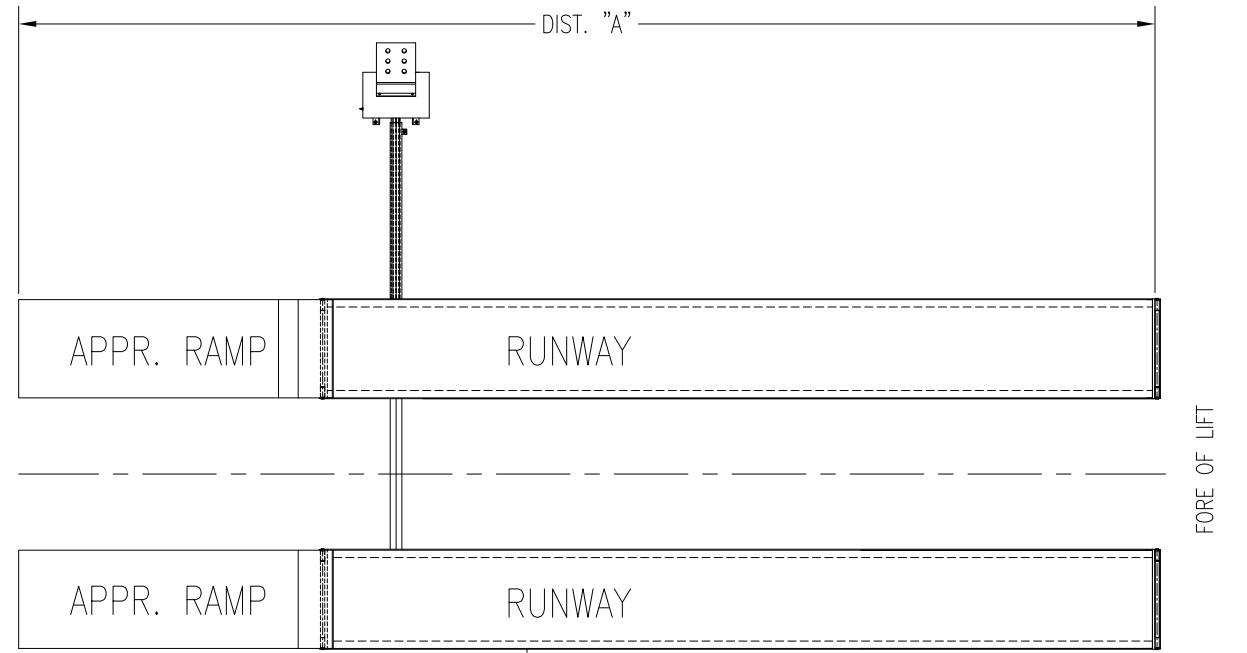
OVERALL LIFTING HEIGHT 5'-8 3/4"

OVERALL WIDTH 109"

OPTIONAL - ROLLING JACKING BEAM



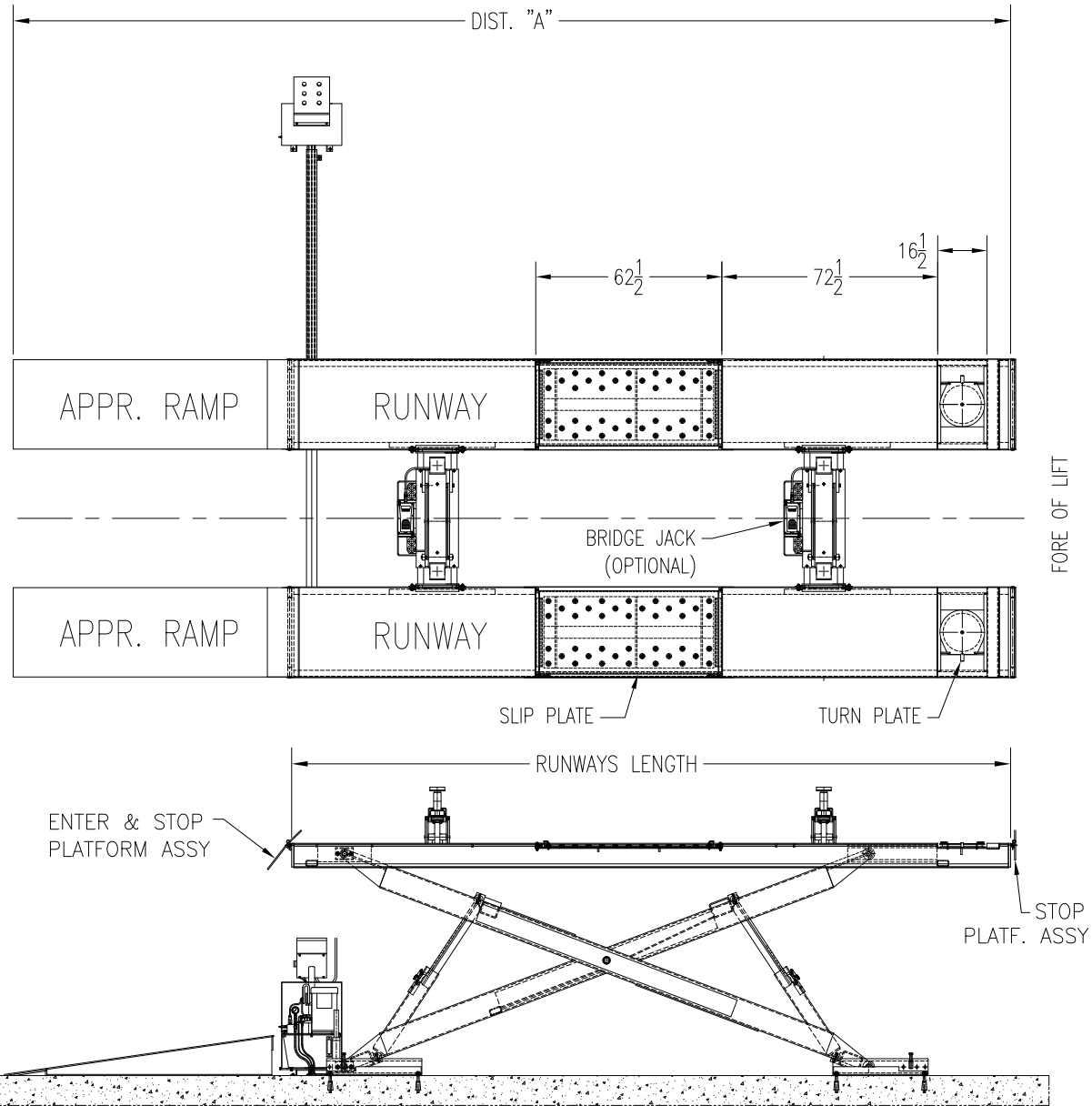
FLOOR REQUIREMENTS: 3,000 PSI,
 6" MIN. THICK REINFORCED CONCRETE.



DWN. JK	TITLE SCISSOR LIFT MODEL PKSC30	NOTES PKSC30
APPR. KK	P K S	MAY 04/2017
	DWG PKSC30-FIG.01	A

SPECIFICATION

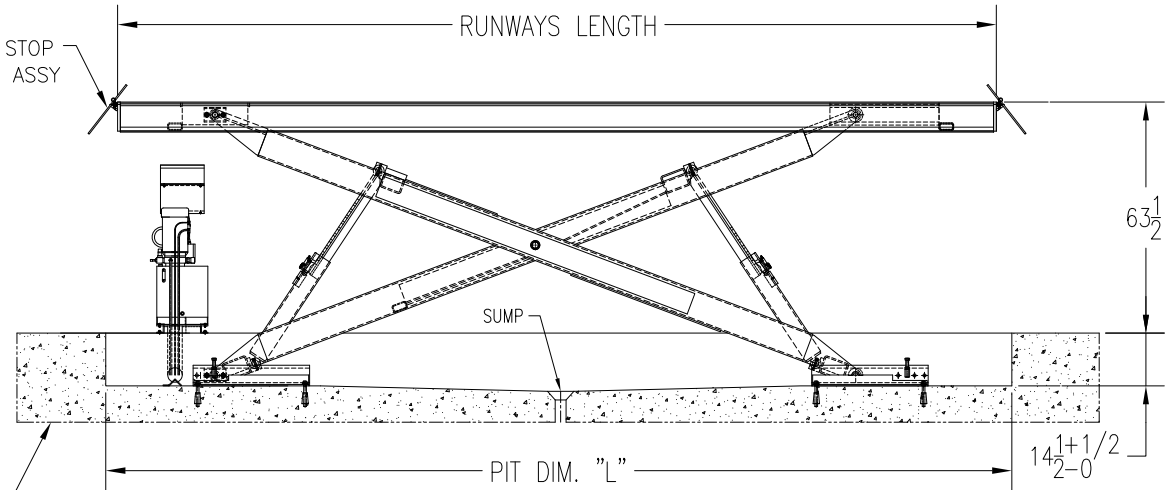
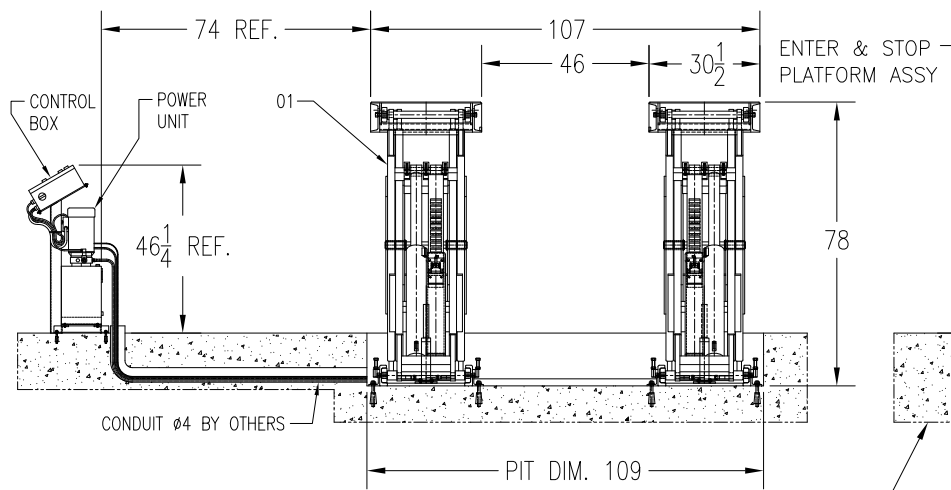
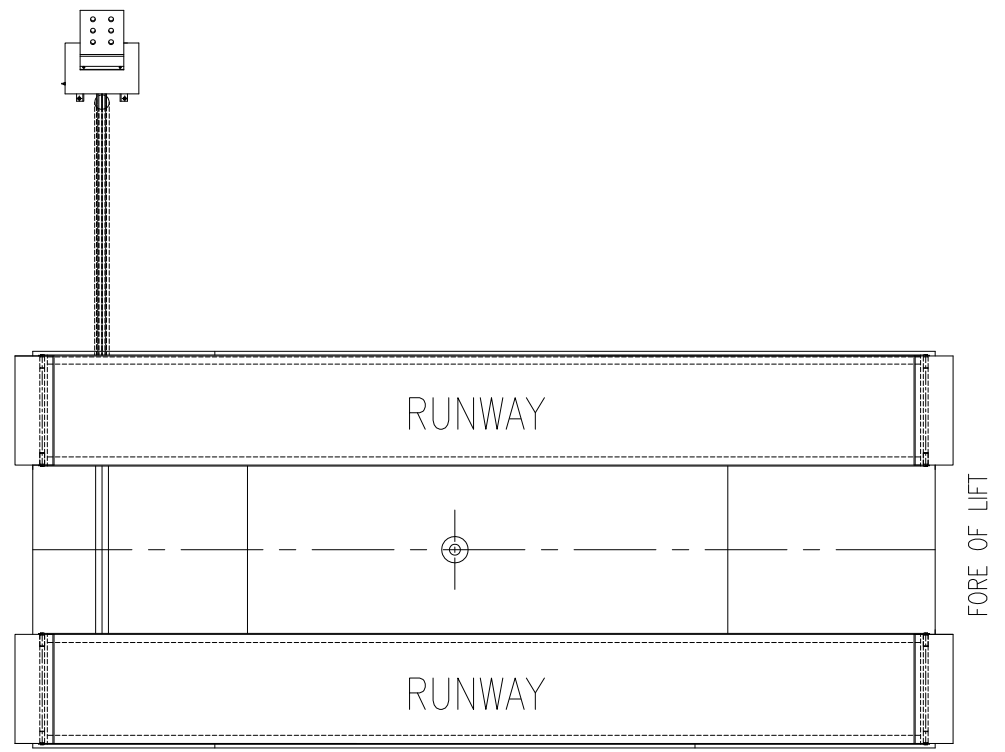
SCISSOR LIFT MODEL: PKSC30A HYDRAULICALLY EQUALIZED			
CAPACITY 30,000LBS			
TWO SCISSORS POSTS C/W FOUR HYDRAULIC CYLINDERS			
TWO SAFETY DEVICES ON EACH POST (MECHANICAL/AIR)			
POWER UNIT	STANDARD	5HP, 3PH, 230/460V	
C/W EL. MOTORS	OPTIONAL	5HP, 3PH, 575V	
P/U W/P 3450 PSI	OPTIONAL	5HP, 1PH, 230V	
SPEED OF RISE 72 SEC.			
RUNWAY WIDTH 30-1/2"			
RUNWAY HEIGHT 8-1/4"			DIST. "A"
RUNWAYS LENGTH	MODEL: PKSC30-20A	20' LONG	335"
	MODEL: PKSC30-21A	21' LONG	347"
	MODEL: PKSC30-22A	22' LONG	359"
	MODEL: PKSC30-23A	23' LONG	371"
	MODEL: PKSC30-24A	24' LONG	383"
	MODEL: PKSC30-25A	25' LONG	395"
	MODEL: PKSC30-26A	26' LONG	407"
	MODEL: PKSC30-27A	27' LONG	419"
	MODEL: PKSC30-28A	28' LONG	422"
	MODEL: PKSC30-29A	29' LONG	434"
MODEL: PKSC30-30A	30' LONG	446"	
OVERALL LIFTING HEIGHT		5'-8 3/4"	
OVERALL WIDTH		109"	
OPTIONAL - ROLLING JACKING BEAM			



FLOOR REQUIREMENTS: 3,000 PSI,
6" MIN. THICK REINFORCED CONCRETE.

DWN. JK	TITLE SCISSOR LIFT MODEL PKSC30A	NOTES PKSC30A
APPR. KK	P K S	DWG PKSC30A-FIG.01
	MAY 04/2017	A

SPECIFICATION			
SCISSOR LIFT MODEL: PKSC30R HYDRAULICALLY EQUALIZED			
CAPACITY 30,000LBS			
TWO SCISSORS POSTS C/W FOUR HYDRAULIC CYLINDERS			
TWO SAFETY DEVICES ON EACH POST (MECHANICAL/AIR)			
POWER UNIT	STANDARD	5HP, 3PH, 230/460V	
C/W EL. MOTORS	OPTIONAL	5HP, 3PH, 575V	
P/U W/P 3450 PSI	OPTIONAL	5HP, 1PH, 230V	
SPEED OF RISE 72 SEC.			
RUNWAY WIDTH 30-1/2"			
RUNWAY HEIGHT 8-1/4"			PIT DIM. "L"
RUNWAYS LENGTH	MODEL: PKSC25-17-R	17' LONG	212"
	MODEL: PKSC25-18-R	18' LONG	224"
	MODEL: PKSC25-19-R	19' LONG	236"
	MODEL: PKSC25-20-R	20' LONG	248"
	MODEL: PKSC25-21-R	21' LONG	260"
	MODEL: PKSC25-22-R	22' LONG	272"
	MODEL: PKSC25-23-R	23' LONG	284"
	MODEL: PKSC25-24-R	24' LONG	296"
	MODEL: PKSC25-25-R	25' LONG	308"
	MODEL: PKSC25-26-R	26' LONG	320"
	MODEL: PKSC25-27-R	27' LONG	332"
	MODEL: PKSC25-28-R	28' LONG	344"
	MODEL: PKSC25-29-R	29' LONG	356"
MODEL: PKSC25-30-R	30' LONG	368"	
OVERALL LIFTING HEIGHT		5'-8 3/4"	
OVERALL WIDTH		109"	
OPTIONAL - ROLLING JACKING BEAM			



FLOOR REQUIREMENTS: 3,000 PSI,
6" MIN. THICK REINFORCED CONCRETE.

DWN. JK	TITLE SCISSOR LIFT MODEL PKSC30R	NOTES PKSC30R
APPR. KK	P K S MAY 04/2017	DWG PKSC30R-FIG.01 A