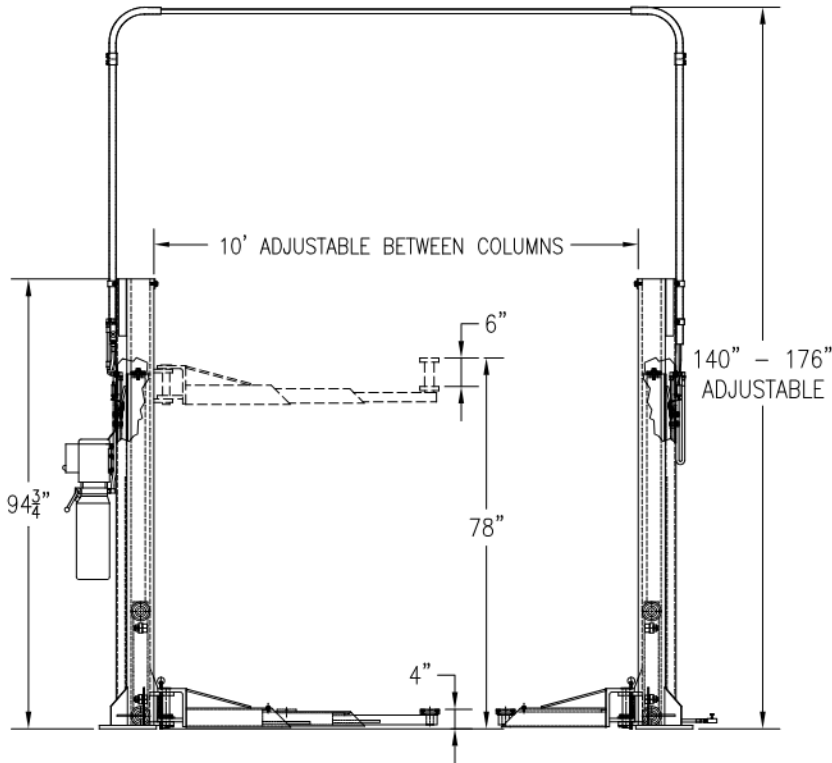


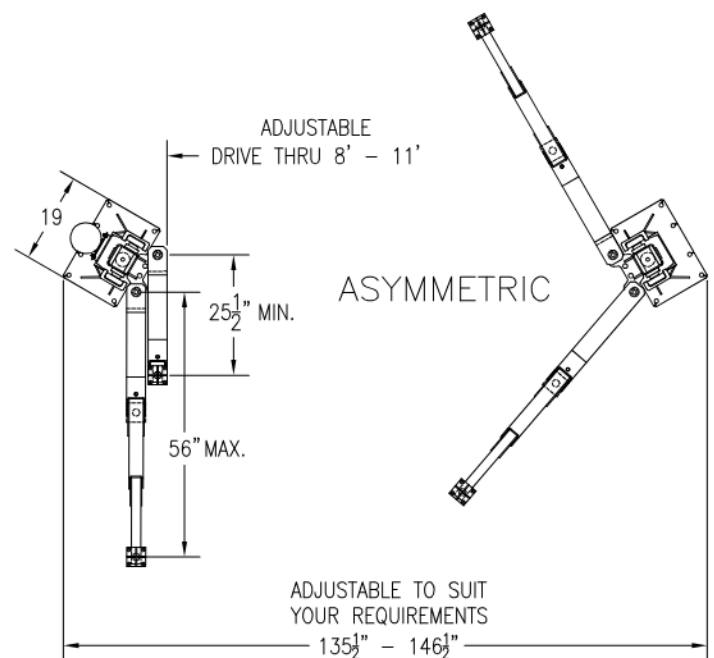
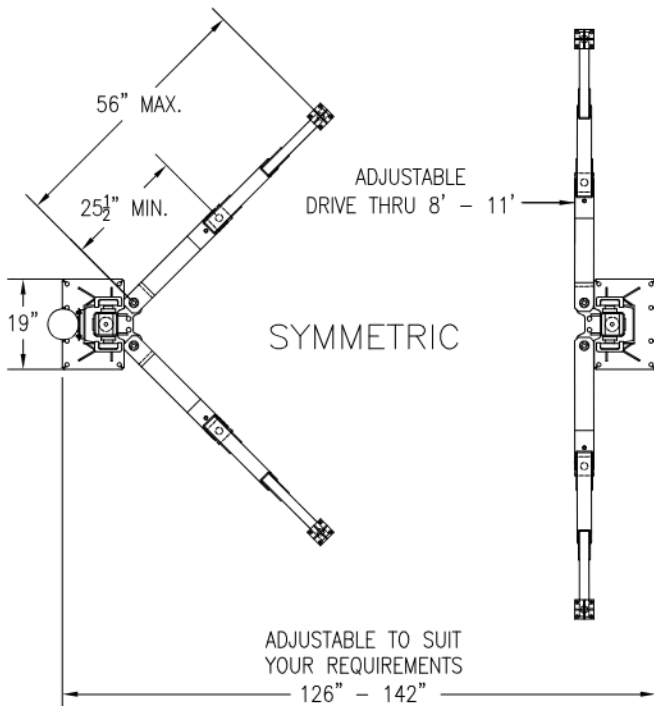
TWO-POST LIFT MODEL: PK10-B

CAPACITY – 10,000 LBS
 RISE: 78"
 MINIMUM CEILING HEIGHT
 REQUIRED: 148"
 MOTOR: 2 HP
 VOLTAGE: 1 phase, 208-230V
 optional: 3 phase, 230-460V



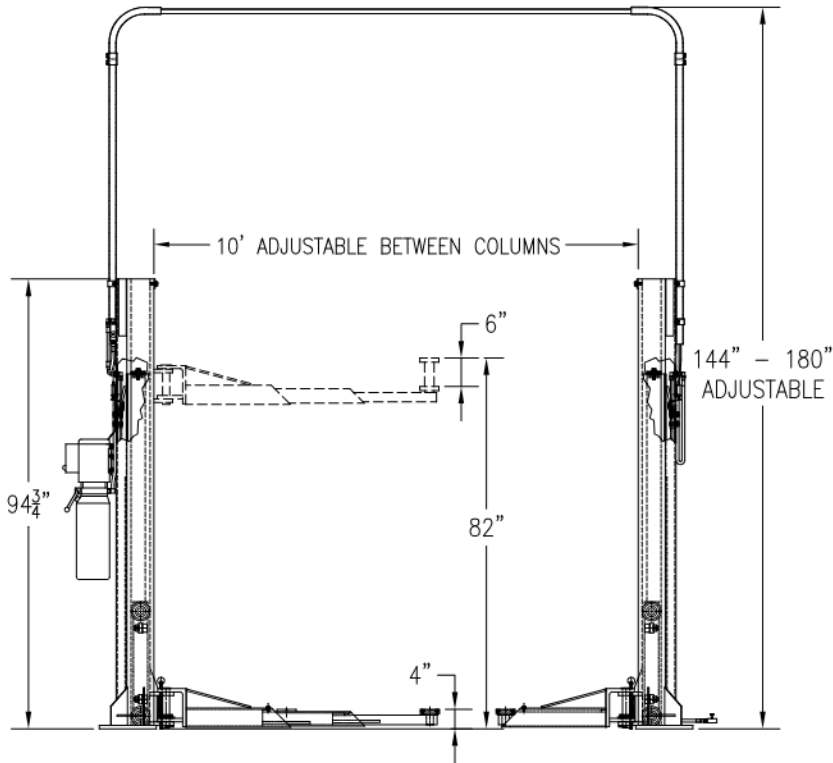
FEATURES:

1. FORKLIFT MAST CHANNEL & ROLLERS
2. CLEAR FLOOR
3. NO OVERHEAD BEAM
4. NO EQUALIZING CABLES
5. LOW PROFILE ARMS
6. A SINGLE POINT LOCK RELEASE
7. ARM RESTRAIN
8. THREE STAGE ARMS



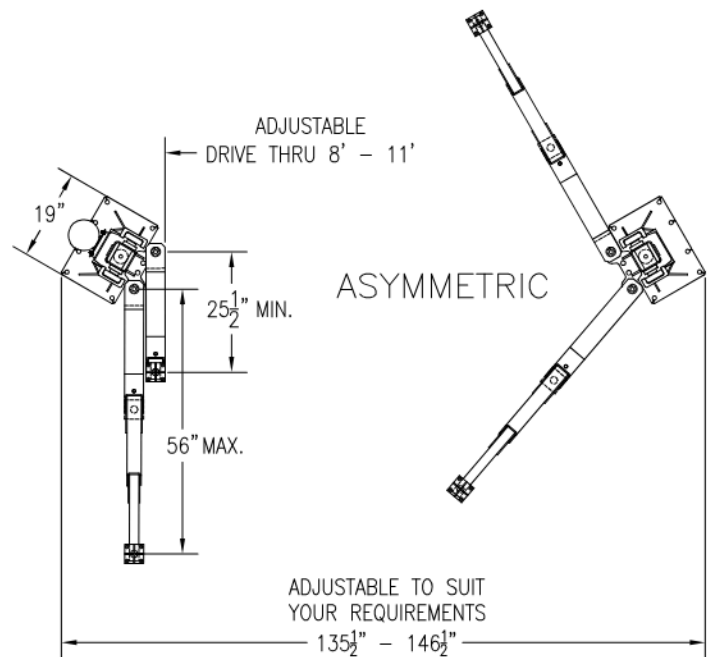
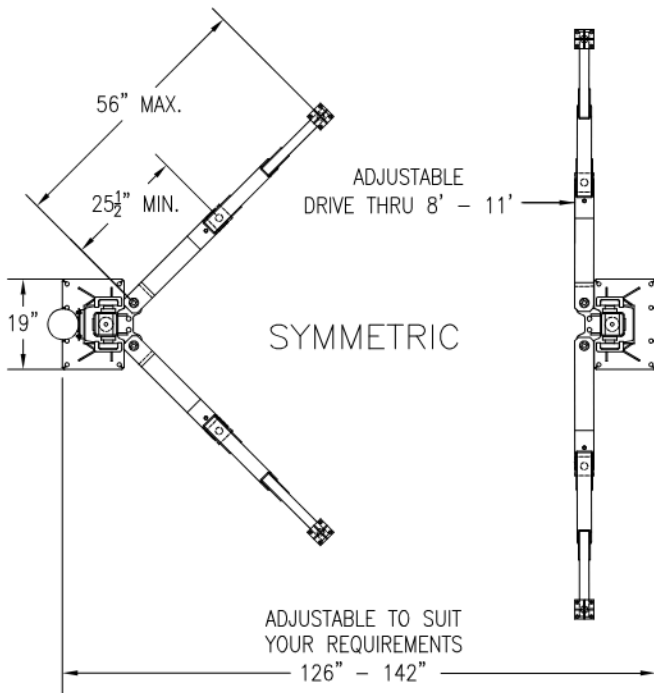
TWO-POST LIFT MODEL: PK10-BH

CAPACITY – 10,000 LBS
 RISE: 82"
 MINIMUM CEILING HEIGHT
 REQUIRED: 152"
 MOTOR: 2 HP
 VOLTAGE: 1 phase, 208-230V
 optional: 3 phase, 230-460V



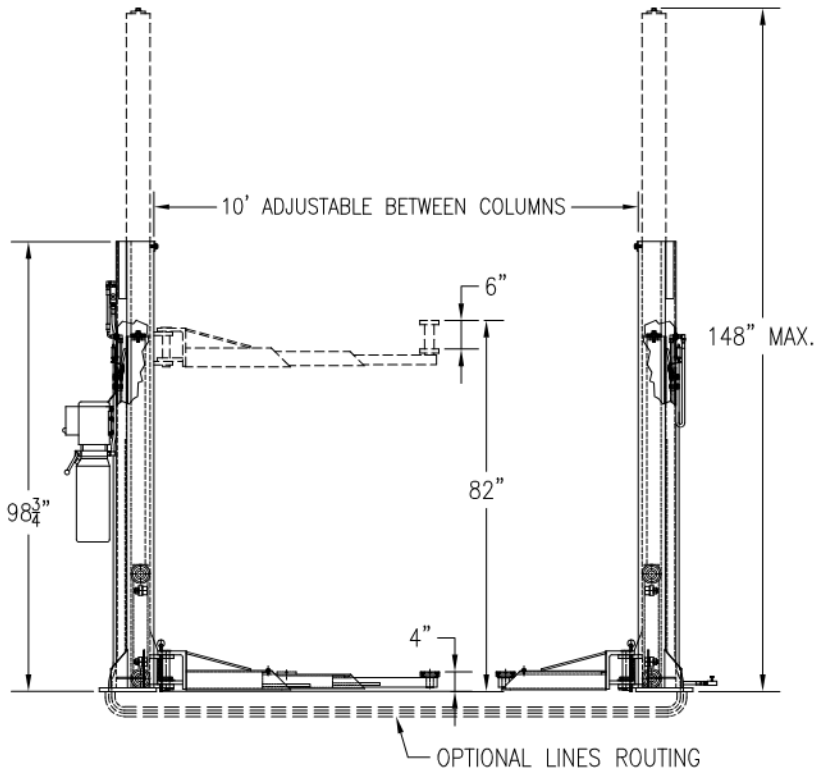
FEATURES:

1. FORKLIFT MAST CHANNEL & ROLLERS
2. CLEAR FLOOR
3. NO OVERHEAD BEAM
4. NO EQUALIZING CABLES
5. LOW PROFILE ARMS
6. A SINGLE POINT LOCK RELEASE
7. ARM RESTRAIN
8. THREE STAGE ARMS



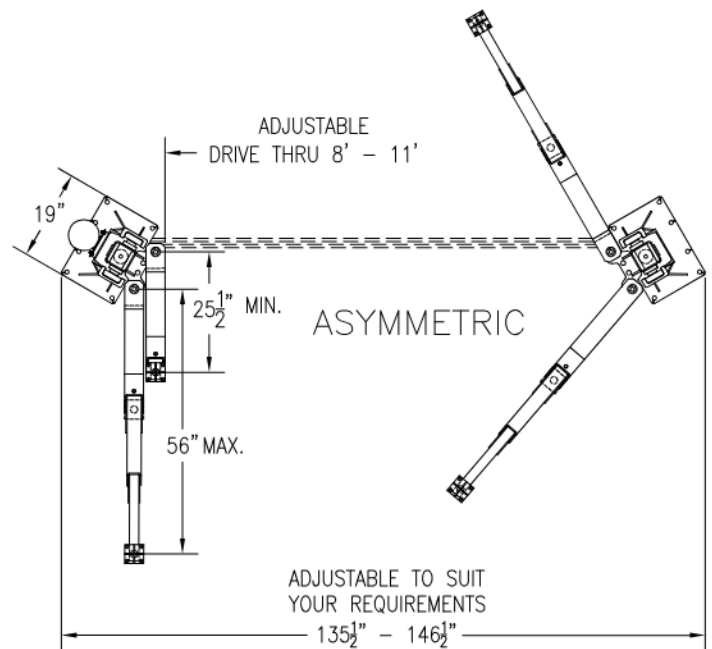
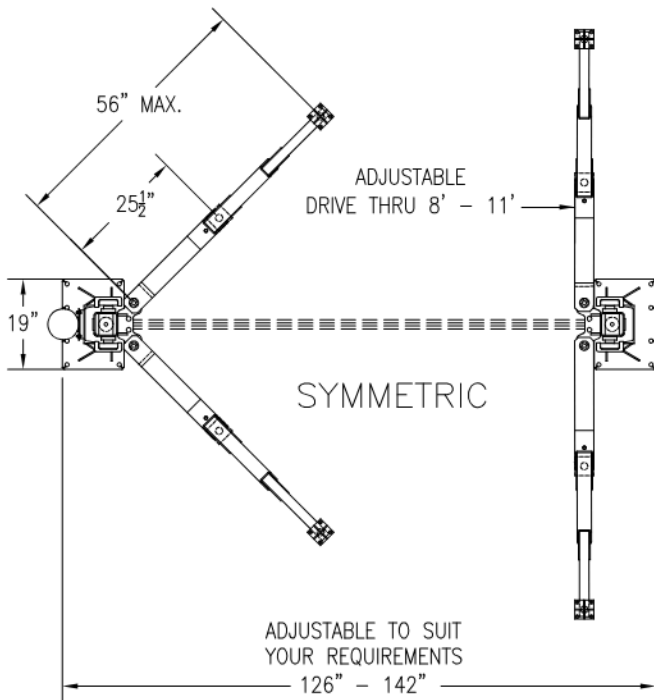
TWO-POST LIFT MODEL: PK10-BH

CAPACITY – 10,000 LBS
 RISE: 82"
 MINIMUM CEILING HEIGHT REQUIRED: 152"
 MOTOR: 2 HP
 VOLTAGE: 1 phase, 208-230V
 optional: 3 phase, 230-460V



FEATURES:

1. FORKLIFT MAST CHANNEL & ROLLERS
2. CLEAR FLOOR
3. NO OVERHEAD BEAM
4. NO EQUALIZING CABLES
5. LOW PROFILE ARMS
6. A SINGLE POINT LOCK RELEASE
7. ARM RESTRAIN
8. THREE STAGE ARMS



TWO-POST LIFT MODEL: PK10-B

CAPACITY – 10,000 LBS
 RISE: 78"
 MINIMUM CEILING HEIGHT
 REQUIRED: 148"
 MOTOR: 2 HP
 VOLTAGE: 1 phase, 208-230V
 optional: 3 phase, 230-460V

FEATURES:

1. FORKLIFT MAST CHANNEL & ROLLERS
2. CLEAR FLOOR
3. NO OVERHEAD BEAM
4. NO EQUALIZING CABLES
5. LOW PROFILE ARMS
6. A SINGLE POINT LOCK RELEASE
7. ARM RESTRAIN
8. THREE STAGE ARMS

