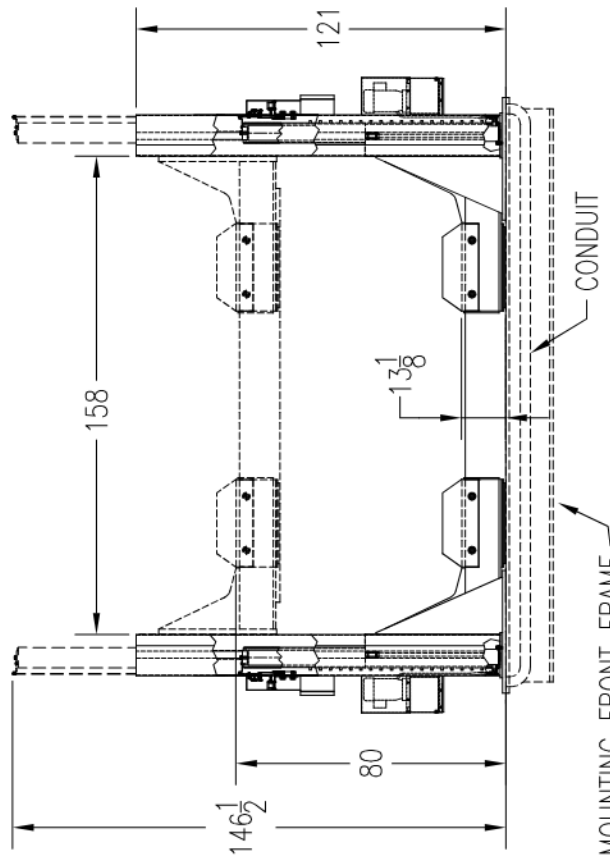
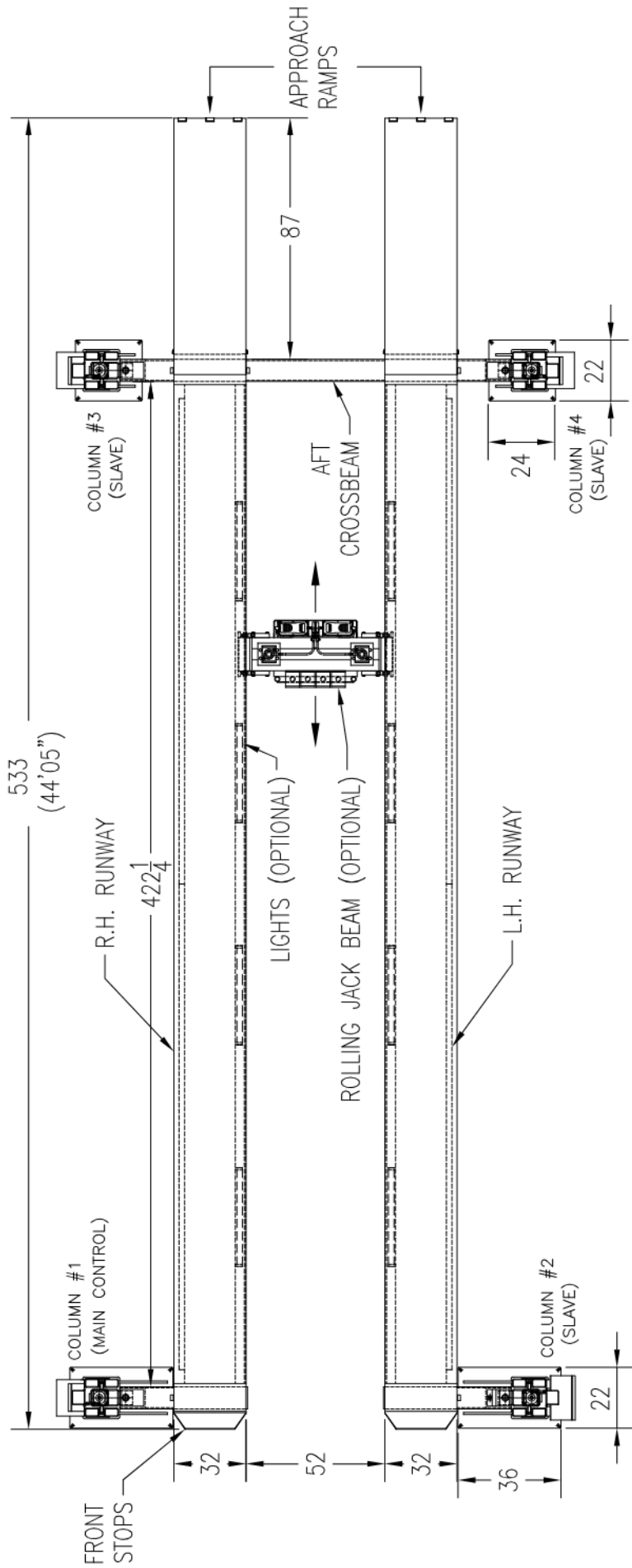


CAPACITY	130,000 LBS	INSIDE COLUMN CLEARANCE	144"
FOUR HYDRAULIC CYLINDERS		RUNWAY HEIGHT	13"
FOUR POWER UNITS		RUNWAY WIDTH	32"
PLC BASED CONTROL SYSTEM		OVERALL HEIGHT	109"
SAFETY DEVICES ON EACH COLUMN(MECH.,HYDR.)		OVERALL LIFTING HEIGHT	80"
ELECTRICAL 4 x 3HP (575V)		OVERALL WIDTH	186"
WHEELBASE	32'	OPTIONAL - ROLLING JACKING BEAM	

TITLE	MATERIAL	NOTES
FOUR POST LIFT-130-45	SPEC.	PK130-4
P K S	DWG	PK130-4-45 A
	MAY.26/2006	





CAPACITY	130,000 LBS	INSIDE COLUMN CLEARANCE	158"
FOUR HYDRAULIC CYLINDERS		RUNWAY HEIGHT	13"
FOUR POWER UNITS		RUNWAY WIDTH	32"
PLC BASED CONTROL SYSTEM		OVERALL HEIGHT	121"
SAFETY DEVICES ON EACH COLUMN(MECH.,HYDR.)		OVERALL LIFTING HEIGHT	80"
ELECTRICAL 4 x 3HP (575V)		OVERALL WIDTH	194"
WHEELBASE	32'	OPTIONAL - ROLLING JACKING BEAM	

NOTES

MATERIAL

TITLE

DATE

BY

CHKD

APP'D

SCALE

PROJECT

DESCRIPTION

REV

DATE

BY

CHKD

APP'D

SCALE

PROJECT

4 POST LIFT 130.35 OPEN FRONT BEAM

SPEC.

PK130E-4-0FB

DWG

PK130E40FB-01

A

JULY 15/2011

P

K

S

PK130E-4-0FB

01

A

PK130E40FB-01

A

PK130E-4-0FB

01

PK130E-4-0FB